



## Complementary Products



### Voice Grade Solutions

|                 |     |
|-----------------|-----|
| Series 2 .....  | 406 |
| NT System ..... | 425 |
| 89D Style ..... | 429 |

### Building Entrance Terminals

|                          |     |
|--------------------------|-----|
| Fiber Wall Boxes .....   | 442 |
| Protection Devices ..... | 453 |



# Complementary Products

## Voice Grade Solutions: Series 2

### Series 2 Wired Termination Block System

#### Features

- The original IDC termination block system
- Can be custom configured to meet specific application requirements
- Available in 8- and 10-pair configurations
- Unique center port design allows for patching or testing without removing cross-connect wires or disrupting the circuit
- Versatile mounting hardware allows mounting on wall, in racks, etc.
- Comprehensive labeling options



Series 2 10-pair disconnect block

#### Ordering Information

| Description  | Dimensions (HxWxD)                                    | Catalog Number |
|--|---|----------------|
| <b>8-pair Series 2 block</b> <i>Quantity: 1 (order in multiples of 10)</i><br>Snaps into Type 85 rod mount bracket or standard Type 85 back mount frame  | 0.88" x 4.88" x 1.63"<br>(22.35mm x 123mm x 41.4mm)   | 6036 1 005-00  |
| <b>10-pair Series 2 K110 disconnect block</b> <i>Quantity per Pack: 10</i><br>Snaps into universal mounting system, Type 105 rod mount bracket or standard Type 105 back mount frame. Wires can be terminated with either KRONE insertion tool or industry-standard punchdown tool equipped with 110-blade | 0.88" x 4.88" x 1.63"<br>(22.35mm x 123mm x 41.4mm)   | 6468 5 102-00  |
| <b>10-pair Series 10 block</b> <i>Quantity: 1 (order in multiples of 10)</i><br>Snaps into Type 85 rod mount bracket   | 0.88" x 4.06" x 1.63"<br>(22.35mm x 103.1mm x 41.4mm) | 6730 1 001-00  |
| <b>10-pair Series 10 block</b> <i>Quantity: 1 (order in multiples of 10)</i><br>Includes (20) 5mm spacers for even spacing on Type 85 rod mount bracket  | 0.88" x 4.06" x 1.63"<br>(22.35mm x 103.1mm x 41.4mm) | 6730 1 001-01  |

#### Tech Tip

For proper wire management, use the wire management rings on both sides of the block. Pull half the jumpers or patch cords to one side and the other half to the other side.

#### Tech Tip

Field terminated kits are used for customized applications where preterminated blocks are not required. Used with ADC cable, the kits provide a complete broadband/DSL transmission solution.



## Complementary Products

Voice Grade Solutions: Series 2

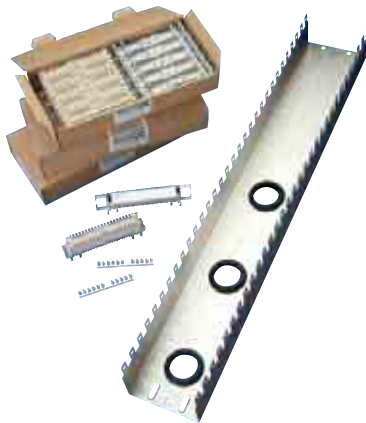
### Series 2 Field Assembly Kits



160-pair kit



200-pair kit



300-pair kit



200-pair rod mount kit

Ordering information follows on the next page



# Complementary Products

## Voice Grade Solutions: Series 2

### Series 2 Field Assembly Kits

#### Ordering Information

| Description   | Dimensions (HxWxD)  | Catalog Number |
|---|---|----------------|
| <b>160-pair field assembly kit</b> <i>Quantity: 1</i><br>Provides termination or patching for (4) 4-pair cables. Includes (20) 8-pair Series 2 blocks, (1) Type 85 label holder, (1) 21-position Type 85 back mount frame, mounting hardware, protective rubber grommets for back mount frame rear cable entry holes  | 18.44" x 4.06" x 3.81"<br>(468.38mm x 103.12mm x 96.77mm) | 6636 1 210-00  |
| <b>200-pair field assembly kit</b> <i>Quantity: 1</i><br>Provides termination or patching for multipurpose cable, including riser cable, totaling up to 200 pairs; allows easy pair identification in 10-pair groups. Includes (2) 10-pair Series 2 blocks, (1) Type 105 label holder, (1) 21-position Type 105 back mount frame, mounting hardware, protective rubber grommets for mounting bracket rear cable entry holes | 18.44" x 4.88" x 3.69"<br>(468.38mm x 123mm x 93.73mm)    | 6638 1 180-00  |
| <b>300-pair field assembly kit</b> <i>Quantity: 1</i><br>Includes (30) Series 2 10-pair blocks, (1) 31-position back mount frame, label holder, mounting hardware   | 27.13" x 4.88" x 3.69"<br>(689mm x 123mm x 93.73mm)       | 6638 1 300-03  |
| <b>200-pair field assembly kit</b> <i>Quantity: 1</i><br>Includes (20) Series 2 10-pair blocks, (1) 21-position rod mount frame, label holder, mounting hardware  | 18.63" x 4.88" x 3.69"<br>(473.2mm x 123mm x 93.73mm)     | 6638 1 180-21  |

6/10 • 102094AE TrueNet® Structured Cabling

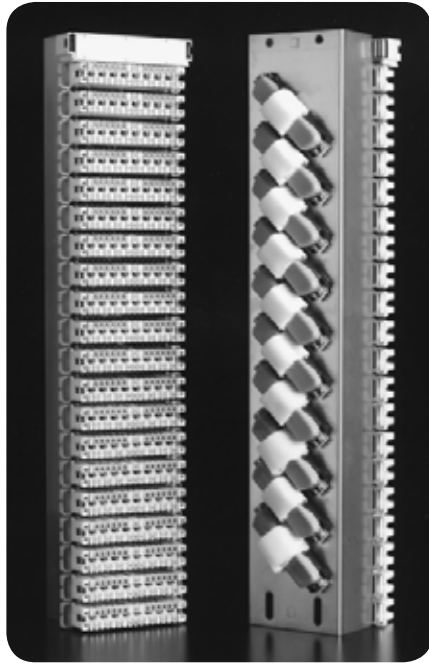


## Complementary Products

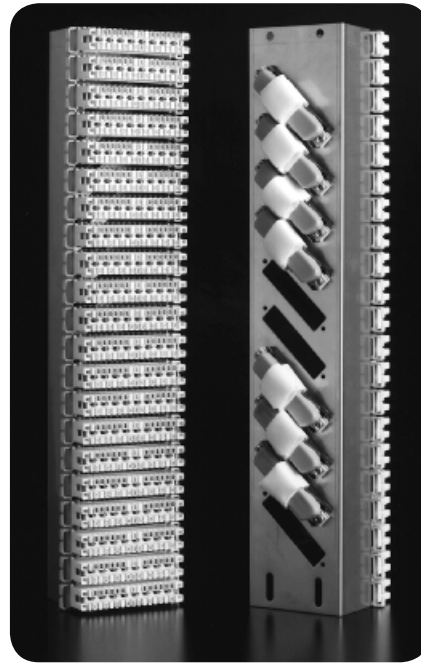
Voice Grade Solutions: Series 2

### Series 2 Preterminated Assemblies

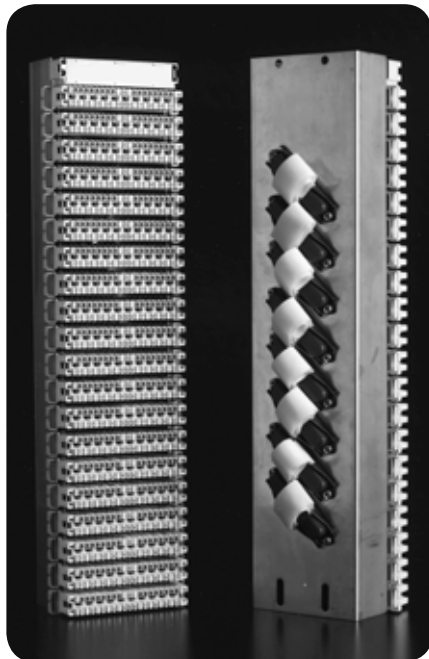
6/10 • 102094AE TrueNet® Structured Cabling



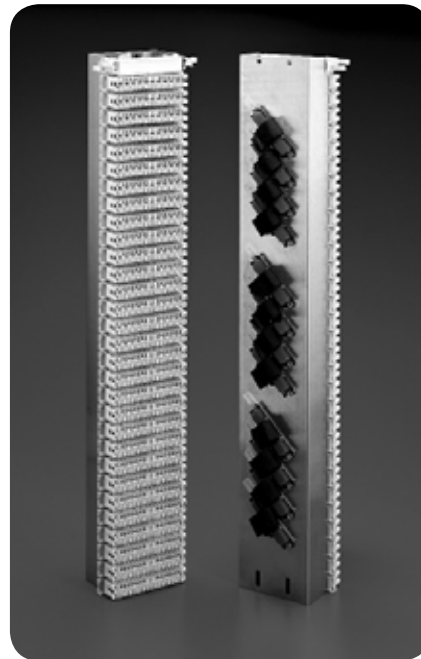
160-pair block, factory preterminated



168-pair block, factory preterminated



200-pair block, factory preterminated



300-pair block, factory preterminated

Ordering information follows on the next page



# Complementary Products

## Voice Grade Solutions: Series 2

### Series 2 Preterminated Assemblies

#### Ordering Information

| Description   | Dimensions (HxWxD)  | Catalog Number |
|---|---|----------------|
| <b>160-pair factory preterminated kit</b> <i>Quantity: 1</i><br>For PBX switch cables using only 16-pair per Telco connector, or for IBM 3270 applications. Includes (20) 8-pair Series 2 blocks, affixed to back mount frame, preterminated to (10) RJ-21 50-pin male connectors with hook-and-loop fastener locks. Wires divided into 16-pair groups. Each RJ-21 50-pin connector is connected to (2) Series 2 blocks at the opposite end: Pairs 1 to 8 terminate to first block; pairs 9 to 16 terminate to second block. Sequence repeated for each 50-pin connector. Includes (1) Type 85 label holder | 18.44" x 4.06" x 3.81"<br>(468.38mm x 103.12mm x 96.77mm) | 6635 1 210-08  |
| <b>168-pair factory preterminated kit</b> <i>Quantity: 1</i><br>For PBX systems. Includes (21) 8-pair Series 2 blocks, affixed to back mount frame, preterminated to (7) RJ-21 50-pin male connectors; hook-and-loop fastener locks on each 50-pin connector secure equipment cables. Wires divided into 24-pair groups. Each group terminates to (1) RJ-21 50-pin connector at one end and (3) Series 2 blocks at the other end: Pairs 1 to 8 terminate to first block; pairs 9 to 16 terminate to second block; pairs 17 to 24 terminate to third block. Sequence repeated for each 50-pin connector      | 18.44" x 4.06" x 3.81"<br>(468.38mm x 103.12mm x 96.77mm) | 6635 1 220-03  |
| <b>200-pair factory preterminated kit</b><br><b>Series 2 blocks, male connectors</b> <i>Quantity: 1</i><br>For demarcation and multi-pair cable installations. Includes (20) 10-pair Series 2 disconnect blocks preterminated to (8) 25-pair male Telco RJ-21X connectors* on a 21-position back mount frame; includes (1) Type 105 label holder; hook-and-loop fastener locks on each 50-pin connector secure equipment cables. Mounts on mounting frame or support bars   | 18.44" x 4.88" x 3.69"<br>(468.38mm x 123mm x 93.73mm)    | 6637 1 180-03  |

\*25-pair Telco connectors are oriented for bottom feed cable assemblies

Ordering information continues on the next page



## Complementary Products

### Voice Grade Solutions: Series 2

#### Series 2 Preterminated Assemblies

##### Ordering Information

| Description  | Dimensions (HxWxD)                                     | Catalog Number |
|--|--|----------------|
| <b>200-pair factory preterminated kit with 10-pair Series 2 blocks, female connectors</b> <i>Quantity: 1</i><br>For demarcation and multi-pair cable installations. Includes (20) 10-pair Series 2 disconnect blocks preterminated to (8) 25-pair female Telco RJ-21X connectors* on a 21-position back mount frame; includes (1) Type 105 label holder; hook-and-loop fastener locks on each 50-pin connector secure equipment cables. Mounts on mounting frame or support bars | 18.44" x 4.88" x 3.69"<br>(468.38mm x 123mm x 93.73mm) | 6637 1 180-04  |
| <b>300-pair factory preterminated kit with 10-pair Series 2 blocks, male connectors</b> <i>Quantity: 1</i><br>For demarcation and multi-pair cable installations. Includes (30) 10-pair Series 2 disconnect blocks preterminated to (12) 25-pair male Telco RJ-21X connectors on a 21-position back mount frame; includes (1) Type 105 label holder; hook-and-loop fastener locks on each 50-pin connector secure equipment cables. Mounts on support bars                       | 27.13" x 4.88" x 3.69"<br>(689mm x 123mm x 93.73mm)    | 6637 1 210-04  |
| <b>300-pair factory preterminated kit with 10-pair Series 2 blocks, female connectors</b> <i>Quantity: 1</i><br>For demarcation and multi-pair cable installations. Includes (30) 10-pair Series 2 disconnect blocks preterminated to (12) 25-pair female Telco RJ-21X connectors on a 21-position back mount frame; includes (1) Type 105 label holder; hook-and-loop fastener locks on each 50-pin connector secure equipment cable. Mounts on support bars                    | 27.13" x 4.88" x 3.69"<br>(689mm x 123mm x 93.73mm)    | 6637 1 210-10  |

\*25-pair Telco connectors are oriented for bottom feed cable assemblies



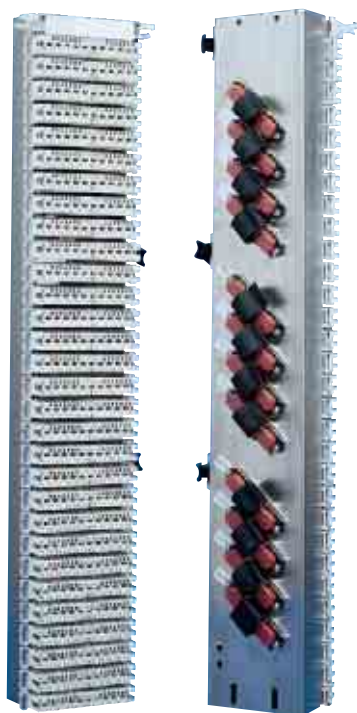


# Complementary Products

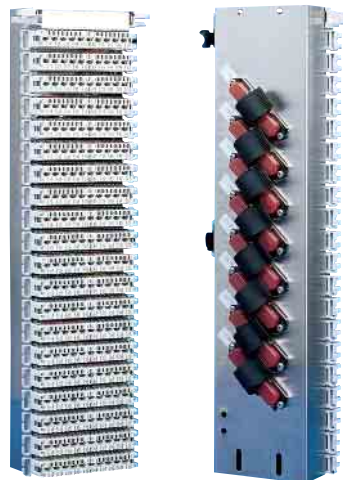
Voice Grade Solutions: Series 2

## Series 2 Preterminated Blocks

6/10 • 102094AE TrueNet® Structured Cabling



300-pair preterminated block



200-pair preterminated block

### Features

- High-density IDC termination system
- Preterminated to reduce installation time
- Provides “look-both-ways” fault isolation, testing and qualification without removing wires
- 25-pair connectors oriented for top feed cable assemblies
- Used with ADC cable, the blocks provide a complete broadband/DSL transmission solution

### Ordering Information

| Description   | Dimensions (HxWxD)                                     | Catalog Number |
|---|--|----------------|
| <b>200-pair block</b> <i>Quantity: 1</i><br>Preterminated to (8) 25-pair female<br>Telco RJ-21X connectors  | 18.44" x 4.88" x 3.69"<br>(468.38mm x 123mm x 93.73mm) | 6637 1 180-49  |
| <b>300-pair block</b> <i>Quantity: 1</i><br>Preterminated to (12) 25-pair female<br>Telco RJ-21X connectors | 27.13" x 4.88" x 3.69"<br>(689mm x 123mm x 93.73mm)    | 6637 1 210-14  |

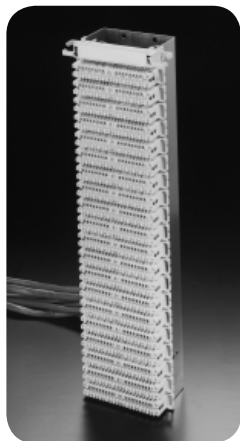




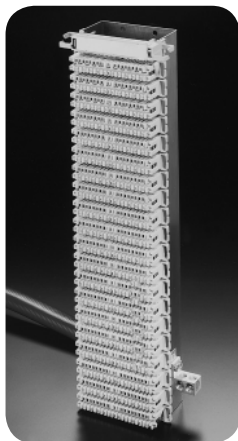
## Complementary Products

### Voice Grade Solutions: Series 2

#### Series 2 Stubbed Disconnect Blocks



200-pair disconnect block with rear exit stub



200-pair disconnect block with bottom rear exit stub



100-pair disconnect block with top exit stub

#### Ordering Information

| Description  | Dimensions (HxWxD)                                     | Catalog Number   |
|--|--|------------------|
| <b>100-pair stubbed disconnect block with ARMM cable</b> <i>Quantity: 1</i><br>Includes (10) 10-pair Series 2 disconnect blocks, label holder, (1) 11-position back mount frame with attached double group lug. Blocks preterminated to 100-pair ARMM (24 AWG) cable (15'); cable stub exits through top of back mount frame<br>Mounts on support bars   | 9.63" x 4.88" x 3.69"<br>(244.6mm x 123mm x 93.73mm)   | 6637 1 140-30/15 |
| <b>200-pair stubbed disconnect block with ARMM cable</b> <i>Quantity: 1</i><br>Includes (20) 10-pair Series 2 disconnect blocks, label holder, (1) 21-position back mount frame with attached double ground lug. Blocks preterminated to 200-pair ARMM (24 AWG) cable; cable stub exits through either top or bottom of assembly through rear cable entry holes on back mount frame<br>Mounts directly to mounting frame or support bars | 18.44" x 4.88" x 3.69"<br>(468.38mm x 123mm x 93.73mm) |                  |
| 25' top rear exit stub   |  | 6637 1 250-01/25 |
| 50' top rear exit stub   |  | 6637 1 250-01/50 |
| 50' bottom rear exit stub  |  | 6637 1 250-02/50 |
| <b>200-pair stubbed disconnect block with PVC cable stubs</b> <i>Quantity: 1</i><br>Includes (20) 10-pair Series 2 disconnect blocks, label holder, (1) 21-position back mount frame. Blocks preterminated to (8) 25-pair unshielded PVC (24 AWG) cables (50'); cable stub exits through rear cable exit holes on back mount frame<br>Mounts to mounting frame or support bars   | 18.44" x 4.88" x 3.69"<br>(468.38mm x 123mm x 93.73mm) | 6637 1 180-51/50 |



# Complementary Products

## Voice Grade Solutions: Series 2

### Series 2 8-Pair Termination Block Systems



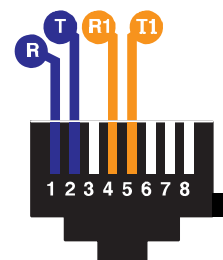
Twenty-eight 2-pair channels, unstubbed



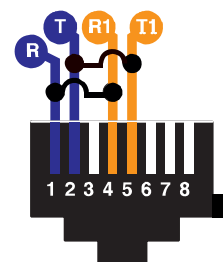
Twenty-eight 2-pair channels, stubbed



Eight 2-pair channels, unstubbed



RJ48C



RJ48X

#### Features

- High-density wire termination system
- Support 4-wire circuits such as T1 or HDSL
- Disconnect blocks provide “look-both-ways” fault isolation, testing and qualification without removing wires
- Provide RJ48X or RJ48C handoff for easy access and circuit labeling
- Equipped with eight-position keyed modular jacks; pins 1, 2, 4 and 5 preterminated to 8-pair Series 2 blocks. When an RJ plug is removed, pin 1 shorts to pin 4 and pin 2 shorts to pin 5, via a shorting bar located in the jack. Upon insertion of a plug, the shorts are removed
- RJ48C versions can be used in conjunction with digital data jacks (smart jacks)
- Versatile patching options for easy changes or testing
- Preterminated blocks reduce installation time
- Superior contact performance
- Numerous labeling options
- Variety of mounting options on wall, in racks or cabinets

Ordering information follows on the next page



## Complementary Products

### Voice Grade Solutions: Series 2

#### Series 2 8-Pair Termination Block Systems

##### Ordering Information

| Description   | Dimensions (HxWxD)                                      | Catalog Number   |
|---|---|------------------|
| <b>(28) 2-pair channels with 8-position keyed modular jacks</b> <i>Quantity: 1</i><br>Used to terminate HDSL service or to breakout T3 (DS3) circuit into (28) 2-pair channels. 8-position keyed modular jack; pins 1, 2, 4 and 5 preterminated to (7) 8-pair Series 2 blocks | 18.38" x 4.16" x 3.13"<br>(466.9mm x 105.66mm x 79.5mm) |                  |
| RJ48X modular jacks, no cable stub  |   | 6635 1 140-27    |
| RJ48C modular jacks, no cable stub  |   | 6635 1 140-29    |
| RJ48X modular jacks, (2) 50' cable stub   |   | 6635 1 140-28/50 |
| RJ48C modular jacks, (2) 50' cable stub   |   | 6635 1 140-30/50 |
| <b>(8) 2-pair channels with 8-position keyed modular jacks</b> <i>Quantity: 1</i><br>Used to terminate HDSL service or to breakout T3 (DS3) circuit into (8) 2-pair channels. 8-position keyed modular jack; pins 1, 2, 4 and 5 preterminated to (2) 8-pair Series 2 blocks   | 5.25" x 4.16" x 3.13"<br>(133.35mm x 105.66mm x 79.5mm) |                  |
| RJ48X modular jacks, no cable stub  |   | 6635 1 140-31    |
| RJ48C modular jacks, no cable stub  |   | 6635 1 140-32    |



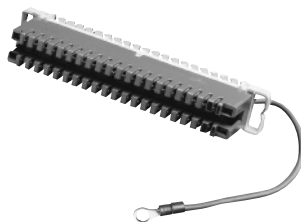
# Complementary Products

Voice Grade Solutions: Series 2

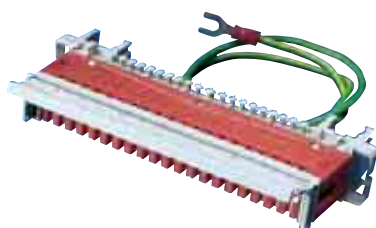
## Grounding Blocks



Ground clip



Type 105 grounding block



Series 2 ground kit



### Ordering Information

| Description  | Dimensions (HxWxD)                                  | Catalog Number |
|--|---|----------------|
| <b>Type 105 grounding block</b> <i>Quantity: 1</i><br>Designed to provide common ground point for shielded cable drain wires; earth lead allows isolated ground connection. Snaps into Type 105 back mount frame or rod mount bracket.<br>NOTE: When used in rod mount bracket, ground clips must be used (2 clips per block)<br>Termination:<br>38 drain wires: 20 AWG<br>76 drain wires: 22 to 26 AWG (2 per contact)<br>Color: Red<br>Earth lead: 9.84" (250mm), 16 AWG red | 0.88" x 4.88" x 1.56"<br>(22.35mm x 123mm x 39.6mm) | 6089 2 017-00  |
| <b>Ground clips</b> <i>Quantity: 1</i><br>Snap onto each end of 8- or 10-pair Series 2 rod mount block to ground to rod mount bracket. Allows installation of 10-pair protection magazine when overvoltage protection is required  |   | 6089 3 202-00  |
| <b>Series 2 rod mount/back mount frame ground kit</b> <i>Quantity: 1</i><br>Kit includes (1) 10-pair hinged label holder, (1) earth module capable of terminating 68 drain wires (2 per contact). Remove standard 10-pair block label holder and replace with earth module and hinged label holder   |   | 6638 1 180-24  |



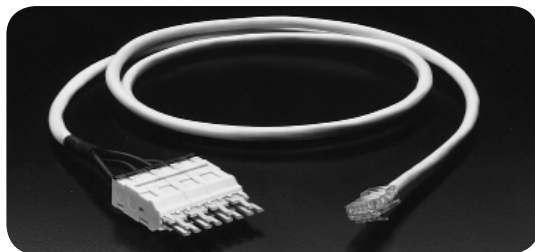
# Complementary Products

## Voice Grade Solutions: Series 2

### Series 2 Accessories:

### Category 5 Patch Cords for Series 2 Blocks

These patch cords are used in all Series 2 8-pair and 10-pair disconnect blocks and exceed Category 5 specifications for NEXT.



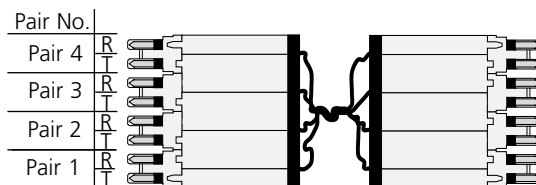
Category 5 Series 2 patch cords



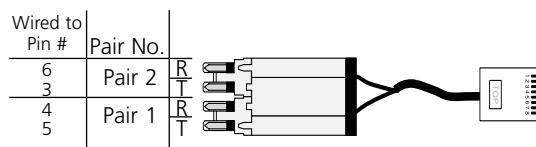
6647 2 000-XX



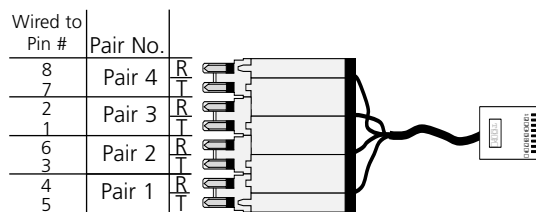
6647 2 753-XX



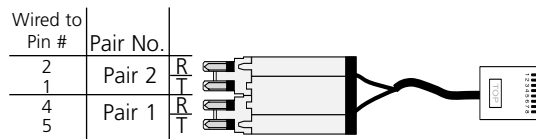
6647 2 752-XX



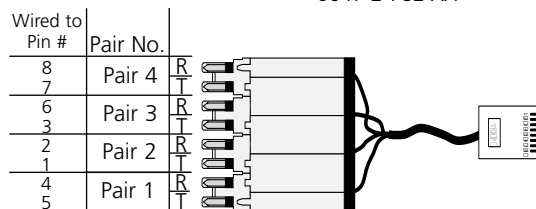
6647 2 762-XX



6647 2 750-XX



6647 2 782-XX



6647 2 751-XX

### Ordering Information

| Description   | Catalog Number*                                 |
|---|---|
| <b>Series 2 plug to Series 2 plug</b> <i>Quantity: 1</i><br>wired straight through, white cable<br>1-pair<br>2-pair<br>4-pair | 6647 2 000-XX<br>6647 2 753-XX<br>6647 2 752-XX |
| <b>Series 2 plug to RJ45 (8P4C) plug</b> <i>Quantity: 1</i><br>wired T568A, white cable<br>2-pair<br>4-pair                   | 6647 2 762-XX<br>6647 2 750-XX                  |
| <b>Series 2 plug to RJ45 (8P4C) plug</b> <i>Quantity: 1</i><br>wired T568B, white cable<br>2-pair<br>4-pair                   | 6647 2 782-XX<br>6647 2 751-XX                  |

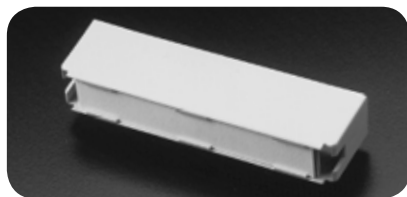
\*Replace XX with: 04 = 4'      15 = 15'  
07 = 7'      25 = 25'  
10 = 10'      50 = 50'



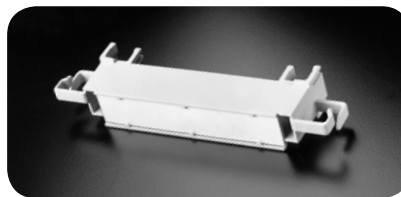
## Complementary Products

Voice Grade Solutions: Series 2

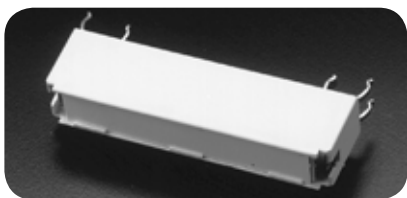
Series 2 Accessories: Labeling for Series 2 Blocks



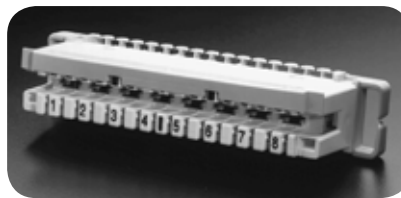
Type 85 label holder



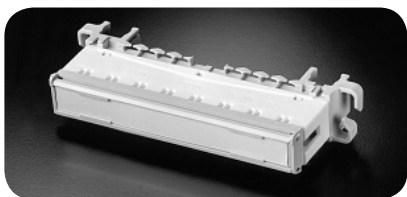
Type 105 label holder



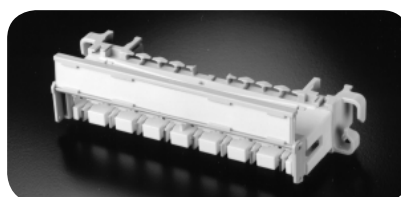
Type 85 rod mount label holder



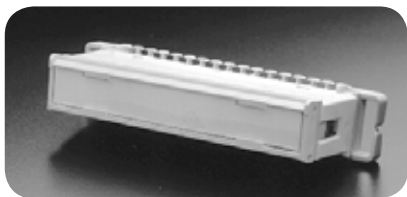
Type 85 label strip



Type 105 hinged closed



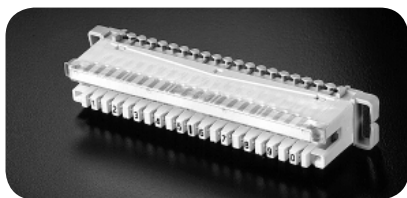
Type 105 hinged open



Type 85 closed



Type 85 open



Type 105 label strip, slotted



Side-mount label holder

Ordering information follows on the next page

6/10 • 102094AE TrueNet® Structured Cabling



# Complementary Products

## Voice Grade Solutions: Series 2

### Series 2 Accessories: Labeling for Series 2 Blocks

#### Ordering Information

| Description   | Dimensions (HxWxD)                                   | Catalog Number |
|---|--|----------------|
| <b>Type 85 label holder</b> <i>Quantity: 1</i><br>Mounts onto Type 85 mounting bracket; each holder requires 1 block position on a mounting bracket. Large printable space allows groupings based on application. Includes paper label, plastic carrier and accepts label catalog number: 6631 3 100-04   | 0.63" x 3.41" x 1.31"<br>(16mm x 86.6mm x 33.27mm)   | 6036 2 018-00  |
| <b>Type 85 rod mount label holder</b> <i>Quantity: 1</i><br>Mounts onto Type 85 rod mount bracket; each holder requires 1 block position. Includes paper label, plastic carrier and accepts label catalog number: 6631 3 100-02   | 0.63" x 3.41" x 1.31"<br>(16mm x 86.6mm x 33.27mm)   | 6630 1 009-01  |
| <b>Type 85 hinged label holder</b> <i>Quantity: 1</i><br>Recommended for jumpered environments. Snaps onto block face to provide hinged cover over block termination contacts and patch/test ports. Includes paper label, clear plastic protective cover for each side of hinged cover and accepts label catalog number: 6631 3 100-02. Cover flips up for patching, cross-connecting, testing and monitoring   | 0.63" x 3.5" x 0.63"<br>(16mm x 88.9mm x 16mm)       | 6036 2 005-02  |
| <b>Side-mount label holder</b> <i>Quantity: 1</i><br>Mounts onto side of either 8- or 10-pair Series 2 blocks. 2 side-mount label holders attach to each block; includes rectangular paper label with each holder   | 0.63" x 1" x 0.31"<br>(16mm x 25.4mm x 7.9mm)        | 6462 2 016-00  |
| <b>Type 105 label holder</b> <i>Quantity: 1</i><br>Includes jumper rings on both sides for additional wire management, paper label, plastic cover and accepts labels catalog number: 6631 3 106-XX<br>Mounts onto Type 105 mounting bracket, Type 105 rod mount bracket or universal mounting system mounting bracket in Type 105 position. Each label holder requires one block position   | 0.81" x 5.63" x 1.31"<br>(20.57mm x 143mm x 33.27mm) | 6630 2 004-05  |
| <b>Type 105 hinged label holder</b> <i>Quantity: 1</i><br>Recommended for jumpered environments. Snaps onto block face to provide hinged cover over block termination contacts and patch/test ports. Includes paper label, clear plastic protective cover for each side of hinged cover and accepts label catalog number: 6631 3 100-03. Cover flips up for patching, cross-connecting, testing and monitoring. <i>Extends 0.38" (9.7mm) from face of block</i> | 0.63" x 4.31" x 0.63"<br>(16mm x 109.47mm x 16mm)    | 6089 2 015-01  |
| <b>Type 105 slotted label strip</b> <i>Quantity per Pack: 10</i><br>Snaps onto face of 10-pair Series 2 block; covers only top row of block and is fully visible with patch cords in place. Includes one slide-in paper label (Catalog Number: 6631 3 102-XX) or can be written on directly   | 0.81" x 4.25" x 0.88"<br>(20.57mm x 107.9mm x 22mm)  | 6462 2 096-00  |





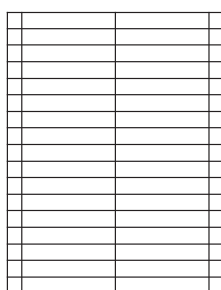
# Complementary Products

## Voice Grade Solutions: Series 2

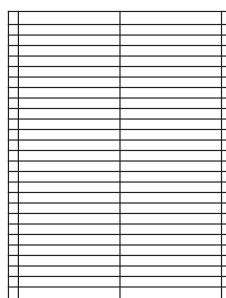
### Series 2 Accessories: Labeling for Series 2 Blocks

#### Examples of TIA/EIA-606 Color Coding

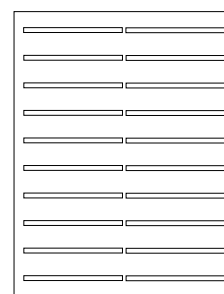
| Color                                    | Identifies   |
|--|--|
| Orange                                   | Demarcation point (e.g., central office terminations)  |
| Green                                    | Network connections (e.g., network and auxiliary equipment)  |
| Purple                                   | Common equipment, PBX, LANs, multiplexers (e.g., switching and data equipment)   |
| White                                    | First level backbone (e.g., main cross-connect [MC (campus distributor[CD])] to a horizontal cross-connect [HC (floor distributor [FD])] or to an intermediate cross-connect [IC (building distributor [BD])]) |
| Gray                                     | Second level backbone (e.g., IC [BD] to a HC [FD])   |
| Blue                                     | Horizontal cable (e.g., horizontal connections to telecommunications outlets; formerly referred to as "station cable")   |
| Brown                                    | Interbuilding backbone (campus cable terminations)<br>NOTE: Brown takes precedence over white or gray for interbuilding runs   |
| Yellow                                   | Miscellaneous (e.g., auxiliary, alarms, security)  |
| Red                                      | Reserved for future use (also, key telephone systems)  |
| Based on ANSI/TIA/EIA-606-A, May 1, 2002 |  |



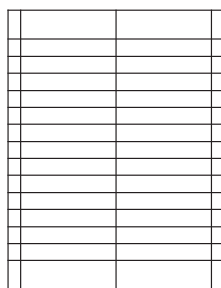
Label sheet for Type  
85 label holder



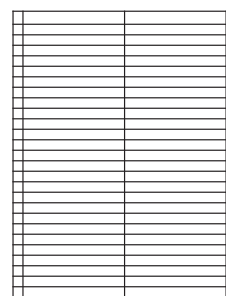
Label sheet for Type 85 rod  
mount/hinged label strip



Label sheet for Type 105  
label strip



Label sheet for Type 105  
label holder



Label sheet for Type 105  
hinged label holder

Ordering information follows on the next page



# Complementary Products

## Voice Grade Solutions: Series 2

### Series 2 Accessories: Labeling for Series 2 Blocks

#### Ordering Information

| Description  | Catalog Number  |
|--|---|
| <b>Paper label sheet for Type 85 rod mount label holder</b><br>Labels come pre-cut on a white, 8.5" x 11" sheet, with 30 labels per sheet; accommodate hand or laser printing <i>Quantity: 1 sheet per package</i>   | 6631 3 100-04   |
| <b>Paper label sheet for Type 85 label holder, hinged label holder or label strip</b><br>Labels come pre-cut on a white, 8.5" x 11" sheet, with 50 labels per sheet; accommodate hand or laser printing <i>Quantity: 1 sheet per package</i>   | 6631 3 100-02   |
| <b>Paper label sheets in TIA/EIA-606 colors for Type 85 label holder, hinged label holder or label strip</b> Labels come pre-cut on an 8.5" x 11" sheet with 50 labels per sheet; accommodate hand or laser printing <i>Quantity: 1 sheet per package</i>                                      | 6631 3 085-04   |
| <b>Paper label sheet for Type 105 hinged label holder</b><br>Labels come pre-cut on a white 8.5" x 11" sheet, with 50 labels per sheet; accommodate hand or laser printing <i>Quantity: 1 sheet per package</i>  | 6631 3 100-03   |
| <b>Paper label sheets in TIA/EIA-606 colors for Type 105 hinged label holder</b><br>Labels come pre-cut on an 8.5" x 11" sheet with 50 labels per sheet; accommodate hand or laser printing <i>Quantity: 1 sheet per package</i>   | 6631 3 105-XX*<br>Not available in<br>-05 (brown)<br>-06 (yellow)<br>-07 (red)<br>-08 (white) |
| <b>Paper label sheet for Type 105 label holder</b><br>Labels come pre-cut on a white 8.5" x 11" sheet, with 26 labels per sheet; accommodate hand or laser printing <i>Quantity: 1 sheet per package</i>   | 6631 3 106-XX*  |
| <b>Paper label sheet for Type 105 label strip</b><br>Labels come perforated on an 8.5" x 11" sheet, 20 labels per sheet; accommodate hand or laser printing. Available in all TIA/EIA-606 specified colors, two colors per sheet (one color on each side) <i>Quantity: 1 sheet per package</i> |   |
| Orange, red  | 6631 3 102-01/09  |
| Green, purple  | 6631 3 102-02/03  |
| White, blue  | 6631 3 102-04/06  |
| Gray, brown  | 6631 3 102-05/07  |
| Yellow, white  | 6631 3 102-08   |

\*Replace XX with:

- 00 = orange
- 01 = green
- 02 = purple
- 03 = gray
- 04 = blue
- 05 = brown
- 06 = yellow
- 07 = red
- 08 = white



# Complementary Products

Voice Grade Solutions: Series 2

## Series 2 Accessories



Disconnect plug



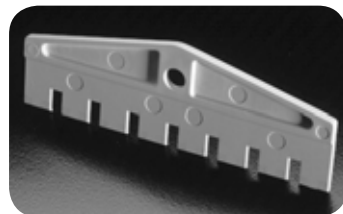
Flat-top dummy plug



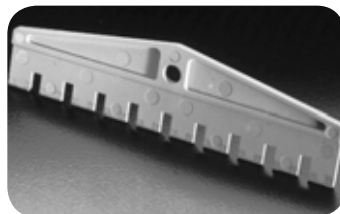
Winged test adapter



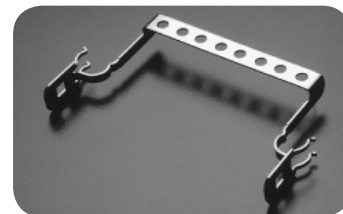
Signature device



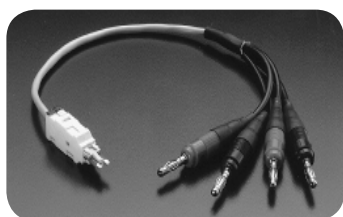
8-pair disconnect bar



10-pair disconnect bar



Cable clamp



"Look-both-ways" test cord



Bridging test cord



One-pair site-mounted test cord



Dust cover, 200-pair



Marking caps



Ground clip

Ordering information follows on the next page



# Complementary Products

## Voice Grade Solutions: Series 2

### Series 2 Accessories

#### Ordering Information

| Description  | Dimensions (HxWxD)                                 | Catalog Number |
|--|--|----------------|
| <b>Disconnect plug</b> <i>Quantity: 1</i><br>(order in multiples of 100)<br>Color-coded plastic plugs plug into disconnect block to open a pair of contacts. Center hole for attaching ID tabs. Green <b>only</b>  |  | 6089 3 055-02  |
| <b>Flat-top dummy plugs</b> <i>Quantity: 1</i><br>(order in multiples of 100)<br>Color-coded, plastic dummy plugs designed to plug into disconnect block for quick identification of special circuits and to block port access. Surface for writing or attaching small adhesive stickers (not supplied). Center hole for attaching ID tabs |  |                |
| Red  |  | 6417 3 105-00  |
| White  |  | 6417 3 105-01  |
| Blue   |  | 6417 3 105-07  |
| <b>Marking caps</b> <i>Quantity: 1</i><br>(order in multiples of 100)<br>Color-coded, plastic marking caps designed to snap over a block pair for quick identification of special circuits. Caps block access to prevent accidental removal of jumper wires, but do not interfere with patching  |  |                |
| Red  |  | 6089 3 006-00  |
| White  |  | 6089 3 006-01  |
| Blue   |  | 6089 3 006-07  |
| <b>Ground clips</b> <i>Quantity: 1</i><br>Snap onto each end of 8- or 10-pair Series 2 rod mount block to ground to rod mount bracket. Used with connect-style blocks, allowing installation of 10-pair protection magazine when secondary protection is required  |  | 6089 3 202-00  |
| <b>Cable clamp</b> <i>Quantity: 1</i><br>Used to ground 10-pair Series 2 block. Fits on back of 10-pair rod mount blocks to provide tie-off point for cable foil on braided shield   | 0.5" x 0.81"<br>(12.7mm x 20.64mm)                 | 6619 3 011-00  |
| <b>Disconnect bars</b> <i>Quantity: 1</i><br>Plug into disconnect blocks to open all contacts simultaneously. For cutover and other applications requiring numerous service disconnects. Made of plastic. <i>Extend 0.44" (11.11mm) from face of block</i>   |  |                |
| 8-pair disconnect bar  | 0.13" x 2.88" x 1"<br>(22.23mm x 73.15mm x 25.4mm) | 6418 3 405-00  |

Ordering information continues on the next page



# Complementary Products

## Voice Grade Solutions: Series 2

### Series 2 Accessories

#### Ordering Information

| Description   | Dimensions (HxWxD)                               | Catalog Number |
|---|--|----------------|
| <b>200-pair dust cover</b> <i>Quantity: 1</i><br>Protects (20) 10-pair Series 2 blocks. Greater depth to clear overvoltage protection magazines or other devices. Allows approximately 1.25" (31.75mm) clearance from face of block   | 17.75" x 5" x 2.75"<br>(451mm x 127mm x 69.85mm) | 6638 2 000-00  |
| <b>Winged test adapter</b> <i>Quantity: 1</i><br>Allows monitoring of circuit without disruption in Series 2 blocks   |  | 6646 2 928-00  |
| <b>Signature device</b> <i>Quantity: 25</i><br>Provides ability to remotely sectionalize subscriber line fault to either the customer or network side of installation site by bridging line at the customer's premises with voltage-level and voltage-polarity sensitive resistance. Provides signature for CO test equipment, even with customer side unterminated |  | 6647 1 010-00  |
| <b>Test Cords</b>   |  |                |
| <b>Series 2 bridging test cord, 1-pair with 2 banana plugs</b> <i>Quantity: 1</i><br>Used to test parallel to the circuit. Two banana plugs connect to test equipment   |  | 6646 2 900-XX* |
| <b>Series 2 "look-both-ways" test cord</b> <i>Quantity: 1</i><br>Isolates cable side from jumper side for "look-both-ways" testing  |  |                |
| 1-pair with 4 banana plugs  |  | 6647 2 900-XX* |
| 1-pair with 4 alligator clips   |  | 6647 2 906-XX* |
| <b>Series 2 1-pair site-mounted test cord</b> <i>Quantity: 1</i><br>Monitor or "look-both-ways" test circuit with flip of a switch. Mounts on 1 position of back mount frame or directly a wall. Includes RJ11 jack to quickly isolate feeder or distribution network problems  |  | 6645 2 125-XX* |

\*Replace XX with:

01 = 1'

04 = 4'

07 = 7'

10 = 10'

6/10 • 102094AE TrueNet® Structured Cabling



## Complementary Products

### Voice Grade Solutions: NT System

#### NT Termination Block System

Like the Series 2 termination block system, the NT system features 45-degree angled silver-plated contacts, built-in test ports and insulation clamping ribs to protect the termination against vibration and mechanical stresses.

The cable side (feed) contacts on the NT block are situated at a right angle on the back side of the block. After the cable side contacts have been terminated and the blocks installed, access to the cable side contacts is blocked, preventing accidental access to these contacts.

The NT mounting pitch of 0.69-inch (17.5mm) represents a vertical space saving of over 21 percent compared to standard Series 2 installations. Cable pairs are terminated with the KRONE insertion tool and a full line of accessories is available.

#### Features

- 100% compliant with Telcordia TR-NWT-001195
- UL 94V-0 plastic
- Available in disconnect, switching, connect contact styles
- >200 IDC reterminations guaranteed
- >750 test cord insertions guaranteed
- 21% vertical space saving compared to Series 2
- Prevents accidental access to cable side contact during cross-connect work
- Wire diameter range for solid and stranded copper conductors
  - 2 conductors per contact (same diameter) 22-26 AWG
  - 1 conductor per contact 22-26 AWG



NT connect block



NT marking cap



NT hinged label holder (closed)



NT hinged label holder (open)



NT disconnect block



NT switching block



NT label holder



NT disconnect plug



NT back mount frame

Ordering information follows on the next page



# Complementary Products

## Voice Grade Solutions: NT System

### NT Termination Block System

#### Ordering Information

| Description   | Catalog Number             |
|---|----------------------------|
| <b>10-pair NT disconnect block</b> <i>Quantity: 1 (order in multiples of 10)</i><br>Normally closed contact. Snaps into NT back mount frame   | 7014 1 004-03              |
| <b>10-pair NT footprint ground block</b> <i>Quantity: 1 (order in multiples of 10)</i><br>Terminates up to 20 drain wires. Snaps into NT back mount frame   | 7014 1 005-00              |
| <b>NT to Series 2 adapter</b> <i>Quantity: 1</i><br>Accepts any standard single pair Series 2 test cord for NT testing  | 7014 1 014-00              |
| <b>Black NT dummy plug</b> <i>Quantity: 1 (order in multiples of 100)</i><br>Inserts into test/patch port of NT block for quick identification of special circuits. Plugs block access to pair and prevent accidental removal of jumper wires   | 7014 3 049-00              |
| <b>Red NT marking caps</b> <i>Quantity: 1 (order in multiples of 100)</i><br>Snaps over block pair for quick identification of special circuits. Blocks access to pair and prevents accidental removal of jumper wires  | 6196 3 042-00              |
| <b>Red NT disconnect plug</b> <i>Quantity: 1 (order in multiples of 100)</i><br>Insert into patch/test port of NT block to open (disconnect) circuit  | 7014 3 021-00              |
| <b>NT 10-pair hinged label holder</b> <i>Quantity: 1</i><br>Snaps onto 10-pair NT block face to provide hinged cover over block termination contacts and patch/test ports. Includes label for each side of hinged cover, clear plastic protective cover. Cover flips up for testing, patching, cross-connection | 7014 2 007-00              |
| <b>NT 10-pair label holder</b> <i>Quantity: 1</i><br>Requires 1 block position on NT back mount frame. Includes compartment for storing dummy plugs, marking caps, disconnect plugs   | 7014 2 006-00              |
| <b>NT 1-pair site mounted test cord</b> <i>Quantity: 1</i><br>Mounts on 1 position of back mount frame or directly on wall  | 6645 2 126-XX <sup>1</sup> |
| <b>NT 1-pair "look-both-ways" test cord</b> <i>Quantity: 1</i><br>XXX = length of test cord in feet<br>001 = 0.3 m (1') 004 = 1.2 m (4'),<br>007 = 2.1 m (7') 010 = 3 m (10')   | ANP-12NBAS-XXX             |
| <b>NT changeover adapter</b> <i>Quantity: 1 (Order in multiples of 10)</i>  | 7014 1 044-00              |

<sup>1</sup> Replace XX with:

01 = 1'

04 = 4'

07 = 7'

10 = 10'

Ordering information continues on the next page





## Complementary Products

Voice Grade Solutions: NT System

### NT Termination Block System

#### Ordering Information

| Description   | Catalog Number |
|---|----------------|
| <b>5-position NT back mount frame</b> <i>Quantity: 1</i><br>50-pair capacity; includes space for label holder   |                |
| Solid back  | 6655 2 850-05  |
| Cable entry holes (1.75" diameter: 1.5" with protective rubber grommet)   | 6655 2 851-05  |
| <b>10-position NT back mount frame</b> <i>Quantity: 1</i><br>100-pair capacity; includes space for label holder |                |
| Solid back  | 6655 2 850-10  |
| Cable entry holes (1.75" diameter: 1.5" with protective rubber grommet)   | 6655 2 851-10  |
| <b>20-position NT back mount frame</b> <i>Quantity: 1</i><br>200-pair capacity; includes space for label holder |                |
| Solid back  | 6655 2 850-20  |
| Cable entry holes (1.75" diameter: 1.5" with protective rubber grommet)   | 6655 2 851-20  |
| <b>30-position NT back mount frame</b> <i>Quantity: 1</i><br>300-pair capacity; includes space for label holder |                |
| Solid back  | 6655 2 850-30  |
| Cable entry holes (1.75" diameter: 1.5" with protective rubber grommet)   | 6655 2 851-30  |



## Complementary Products

Voice Grade Solutions: Accessories

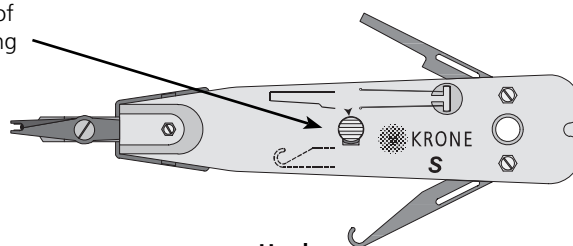
### LSA Plus Insertion Tool



KRONE insertion tool

**Inhibitor Lock**  
Prevents the automatic trimming of excess wire to enable daisy-chaining

**Blade**  
Used to remove termination blocks from back mount frames



**Hook**  
Used to grab and remove wires for changes

#### Features

- Insertion sensor ensures the conductor is fully inserted into the block contacts before allowing any excess wire to be cut off
- An inhibitor lock prevents the scissors from operating—particularly useful in applications in which conductors are daisy-chained through several contacts
- Universal scissors cut a variety of cable types, including 20 AWG through 26 AWG and Type 1 foam-insulated conductors
- Specially designed wire hook removes terminated conductors
- Blade helps to remove blocks easily from back mount frames

#### Ordering Information

| Description  | Catalog Number |
|--|----------------|
| <b>Insertion tool</b> <i>Quantity: 1</i>   | 6417 2 055-01  |
| <b>Disposable tool</b> <i>Quantity: 1</i><br>Terminates wire into contact, will not cut excess wire; snips required to cut off excess wire | 6417 3 006-01  |



## Complementary Products

Voice Grade Solutions: 89D Style

### 89D Style 25-Pair and 50-Pair Termination Blocks and Assemblies



25-pair block



50-pair block



5-pair block

#### Features

- Upgrade from 66-type technology
- Unique center port allows monitoring and “look-both-ways” testing without disturbing IDC
- Double the density at the demarcation point
- Available in traditional 25- and 50-pair increments
- Fits 89D-style mounting brackets
- Preterminated blocks available with a range of connector styles and positioning options
- The K110 feature enables the termination of wire with either the KRONE insertion tool or any industry-standard punchdown tool with a 110 blade. Please note, the 5-pair disconnect block is not K110 compatible.

#### Ordering Information

| Description   | Dimensions (HxWxD)                                 | Catalog Number |
|---|--|----------------|
| <b>25-pair disconnect block assembly</b> <i>Quantity: 1</i><br>Field-terminated disconnect block; snaps into 89D bracket; includes label for empty half                         | 10" x 3.38" x 1.38"<br>(254mm x 85.85mm x 35.05mm) | 6639 1 003-01  |
| <b>50-pair disconnect block assembly</b> <i>Quantity: 1</i><br>Field-terminated disconnect block; snaps into 89D bracket; includes label and label holder                       | 10" x 3.38" x 1.38"<br>(254mm x 85.85mm x 35.05mm) | 6652 1 880-10  |
| <b>5-pair disconnect block</b> <i>Quantity: 1</i><br>Field-terminated disconnect block; mounts directly to wall or in an enclosure.<br><b>This block is not K110 compatible</b> | 2" x 2" x 1.25"<br>(50.8mm x 50.8mm x 31.8mm)      | 6585 2 002-00  |



## Complementary Products

Voice Grade Solutions: 89D Style

### 89D Style Preterminated 25-Pair Blocks

#### 25-Pair Disconnect Block with 25-Pair Female Telco (RJ-21X) Connector



25-pair disconnect block  
with Telco connector

##### Features

- Used at demarcation points
- 25-pair block preterminated to 25-pair female Telco connector for customer interface
- Mounts to wall or in mounting frame
- Quantity: 1

##### Ordering Information

| Description   | Dimensions (HxWxD)                              | Catalog Number |
|---|---|----------------|
| 25-pair disconnect block with 25-pair female Telco (RJ-21X) connector | 10" x 3.38" x 2.88"<br>(254mm x 85.85mm x 73mm) | 6639 1 003-02  |

#### 25-Pair Disconnect Block with RJ-71C



25-pair disconnect block  
with RJ-71C connector

##### Features

- For applications in which telephone service is provided in conjunction with apartment building door answering system
- Provides 12-line series connection with door answering system
- Shorting plug provided to test loop continuity or to bypass the answering system
- Mounts to wall or in mounting frame
- Quantity: 1

##### Ordering Information

| Description                          | Dimensions (HxWxD)                              | Catalog Number |
|--------------------------------------|---|----------------|
| 25-pair disconnect block with RJ-71C | 10" x 3.38" x 2.88"<br>(254mm x 85.85mm x 73mm) | 6639 1 003-04  |

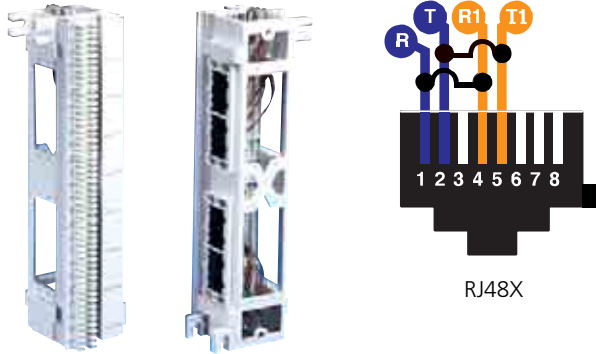


## Complementary Products

Voice Grade Solutions: 89D Style

89D Style Preterminated 25-Pair Blocks

25-Pair Disconnect Block with 8 RJ48X Connectors



25-pair disconnect block  
with 8 RJ48X connectors

### Features

- Connects T1 lines and other 4-wire circuits
- The RJ48X is an 8-position keyed modular jack. Pins 1, 2, 4 and 5 are preterminated to the disconnect block. When RJ plug is removed, pin 1 shorts to pin 4 and pin 2 shorts to pin 5 via a shorting bar located in the jack. When a plug is inserted, the shorts are removed
- For shielded cable applications, pins 7 and 8 of the jack are also preterminated to the block (slate and brown conductors) so a common drain wire connection can be maintained throughout the circuit
- Mounts to wall or in mounting frame
- Quantity: 1

### Ordering Information

| Description   | Dimensions (HxWxD)                              | Catalog Number |
|---|---|----------------|
| 25-pair disconnect block<br>with 8 RJ48X connectors | 10" x 3.38" x 2.88"<br>(254mm x 85.85mm x 73mm) | 6639 1 003-03  |



## Complementary Products

Voice Grade Solutions: 89D Style

### 89D Style Preterminated 25-Pair Blocks

#### 25-Pair Disconnect Block with 12 RJ48S Connectors

##### Features

- Connects T1 lines and other 4-wire circuits
- The RJ48S is an 8-position keyed modular jack with pins 1, 2, 7 and 8 preterminated to the disconnect block
- Mounts to wall or in mounting frame
- Quantity: 1



25-pair disconnect block with  
12 RJ48S connectors

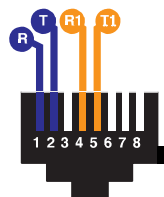
##### Ordering Information

| Description                                       | Dimensions (HxWxD)                              | Catalog Number |
|---|---|----------------|
| 25-pair disconnect block with 12 RJ48S connectors | 10" x 3.38" x 2.88"<br>(254mm x 85.85mm x 73mm) | 6639 1 003-05  |

#### 25-Pair Disconnect Block with 12 RJ48C Connectors

##### Features

- Connects T1 lines and other 4-wire circuits
- The RJ48C is an 8-position keyed modular jack with pins 1, 2, 4 and 5 preterminated to the disconnect block
- Mounts to wall or in mounting frame
- Quantity: 1



RJ48C

##### Ordering Information

| Description                                       | Dimensions (HxWxD)                              | Catalog Number |
|---|---|----------------|
| 25-pair disconnect block with 12 RJ48C connectors | 10" x 3.38" x 2.88"<br>(254mm x 85.85mm x 73mm) | 6639 1 003-18  |



## Complementary Products

Voice Grade Solutions: 89D Style

### 89D Style Preterminated 25-Pair Blocks

#### 25-Pair Disconnect Block with 12 RJ48S and 25-Pair Female Telco (RJ-21X) Connector

##### Features

- Connects T1 lines and other 4-wire circuits
- The RJ48S is an 8-position keyed modular jack with pins 1, 2, 7 and 8 preterminated to the disconnect block
- 25-pair female Telco (RJ-21X) connector is preterminated to the disconnect block, eliminating the need for field termination
- Mounts to wall or in mounting frame
- Quantity: 1



25-pair disconnect block with 12 RJ48S connectors and Telco connector

##### Ordering Information

| Description  | Dimensions (HxWxD)                              | Catalog Number |
|--|---|----------------|
| 25-pair disconnect block with 12 RJ48S and 25-pair female Telco (RJ-21X) connector | 10" x 3.38" x 2.88"<br>(254mm x 85.85mm x 73mm) | 6639 1 003-07  |

#### 25-Pair Disconnect Block with 12 RJ14C and 25-Pair Female Telco (RJ-21X) Connector

##### Features

- Used for bridged connections to the tip and ring conductors of 2 separate telephone lines
- The RJ14C is a 6-position modular jack with pins 2, 3, 4 and 5 preterminated to the disconnect block
- The 25-pair female Telco (RJ-21X) connector is preterminated to the disconnect block, eliminating the need for field termination
- Mounts to wall or in mounting frame
- Quantity: 1



25-pair disconnect block with 12 RJ14C connectors and Telco connector

##### Ordering Information

| Description  | Dimensions (HxWxD)                              | Catalog Number |
|--|---|----------------|
| 25-pair disconnect block with 12 RJ14C and 25-pair female Telco (RJ-21X) connector | 10" x 3.38" x 2.88"<br>(254mm x 85.85mm x 73mm) | 6639 1 003-06  |



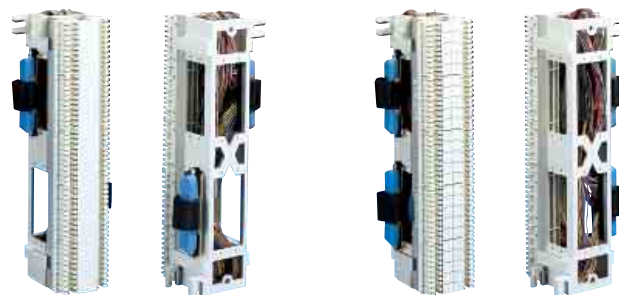
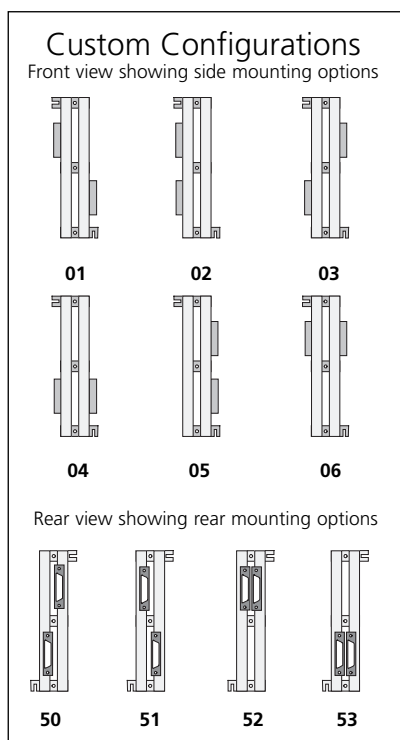


## Complementary Products

Voice Grade Solutions: 89D Style

89D Style Preterminated 50-Pair Blocks

50-Pair Disconnect Block with (2) 25-Pair Telco (RJ-21X) Connectors



Configuration/01: Connectors  
top left, bottom right

Configuration/02: Both  
connectors on left side

### Features

- Used at demarcation points
- Disconnect block is preterminated to (2) 25-pair female or male Telco (RJ-21X) connectors for customer interface
- Includes 89D bracket, hook-and-loop fastener locks, label and label holder
- Blocks can be custom configured: Use chart on this page, substituting the 2-digit number for "01" at the end of the catalog number
- Mounts directly to wall or in mounting frames
- Quantity: 1

### Ordering Information

| Description   | Dimensions (HxWxD)                              | Catalog Number   |
|---|---|------------------|
| 50-pair disconnect block with (2) 25-pair <b>female</b> Telco (RJ-21X) connectors | 10" x 3.38" x 2.88"<br>(254mm x 85.85mm x 73mm) | 6639 1 051-02/01 |
| 50-pair disconnect block with (2) 25-pair <b>male</b> Telco (RJ-21X) connectors   | 10" x 3.38" x 2.88"<br>(254mm x 85.85mm x 73mm) | 6639 1 050-02/01 |

### Tech Tip

When wiring 50-pair blocks with 4-pair data cable, you do not need to skip every fifth pair for patching purposes. In a jumpered environment, terminate all 25 pairs on each side.



## Complementary Products

Voice Grade Solutions: 89D Style

### 89D Style Preterminated 50-Pair Blocks

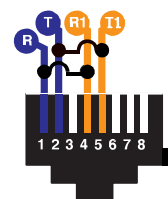
#### 50-Pair Disconnect Block with 16 RJ48X Connectors

##### Features

- The RJ48X is an 8-position keyed modular jack with pins 1, 2, 4 and 5 preterminated to the disconnect block. When RJ plug is removed, pin 1 shorts to pin 4 and pin 2 shorts to pin 5 via a shorting bar located in the jack. When a plug is inserted, the shorts are removed
- Mounts directly to wall or in mounting frames
- Quantity: 1



50-pair disconnect block with 16 RJ48X connectors



RJ48X

##### Ordering Information

| Description                                       | Dimensions (HxWxD)                              | Catalog Number |
|---|---|----------------|
| 50-pair disconnect block with 16 RJ48X connectors | 10" x 3.38" x 2.88"<br>(254mm x 85.85mm x 73mm) | 6639 1 050-32  |

#### 50-Pair Disconnect Block with 16 RJ48X Connectors Modified for Shielded Applications

##### Features

- Connects T1 lines and other 4-wire circuits
- The RJ48X is an 8-position keyed modular jack with pins 1, 2, 4 and 5 preterminated to the disconnect block
- For shielded cable applications, pins 7 and 8 of the jack are preterminated to the block (slate and brown conductors) so a common drain wire connection can be maintained throughout the circuit
- Mounts directly to wall or in mounting frames
- Quantity: 1

##### Ordering Information

| Description  | Dimensions (HxWxD)                              | Catalog Number |
|--|---|----------------|
| 50-pair disconnect block with 16 RJ48X connectors modified for shielded applications | 10" x 3.38" x 2.88"<br>(254mm x 85.85mm x 73mm) | 6639 1 050-33  |



## Complementary Products

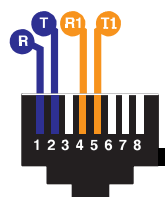
Voice Grade Solutions: 89D Style

### 89D Style Preterminated 50-Pair Blocks

#### 50-Pair Disconnect Block with 16 RJ48C Connectors

##### Features

- Connects T1 lines and other 4-wire circuits
- The RJ48C is an 8-position keyed modular jack with pins 1, 2, 4 and 5 preterminated to the disconnect block
- Mounts directly to wall or in mounting frames
- Quantity: 1



RJ48C

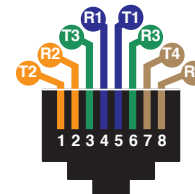
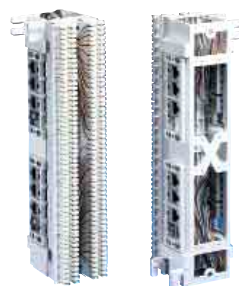
##### Ordering Information

| Description                                       | Dimensions (HxWxD)                              | Catalog Number |
|---|---|----------------|
| 50-pair disconnect block with 16 RJ48X connectors | 10" x 3.38" x 2.88"<br>(254mm x 85.85mm x 73mm) | 6639 1 050-44  |

#### 50-Pair Disconnect Block with 12 RJ45 Connectors

##### Features

- The RJ45 is an 8-position keyed modular jack with pins 5, 4, 1, 2, 3, 6, 7 and 8 (wired TIA 568-B) preterminated to the disconnect block
- Includes label and label holder
- Mounts directly to wall or in mounting frames
- Quantity: 1



T568B

50-pair disconnect block with 12 RJ45 connectors

##### Ordering Information

| Description                                      | Dimensions (HxWxD)                              | Catalog Number |
|--|---|----------------|
| 50-pair disconnect block with 12 RJ45 connectors | 10" x 3.38" x 2.88"<br>(254mm x 85.85mm x 73mm) | 6639 1 052-01  |



## Complementary Products

Voice Grade Solutions: 89D Style

### 89D Style Preterminated 50-Pair Blocks

#### 50-Pair Disconnect Block with ARMM Stub

##### Features

- Incoming cable pairs are preterminated to ARMM (24 AWG, CMR) cable
- 15-foot cable stub exits through top of 89D bracket
- Includes label and label holder
- Quantity: 1



50-pair disconnect block with ARMM stub

##### Ordering Information

| Description                                 | Dimensions (HxWxD)                                 | Catalog Number   |
|---|--|------------------|
| 50-pair disconnect block with ARMM Stub—15' | 10" x 3.38" x 2.88"<br>(254mm x 85.85mm x 73.15mm) | 6639 1 056-01/15 |

#### 50-Pair Disconnect Block with ARMM Stub and (2) 25-Pair Male Telco (RJ-21X) Connectors

##### Features

- Incoming cable pairs are preterminated to ARMM (24 AWG, CMR) cable
- 20-foot cable stub exits through top of 89D bracket
- Two 25-pair male Telco (RJ-21X) connectors are preterminated to the disconnect block, eliminating need for field termination
- Includes label and label holder
- Quantity: 1



50-pair disconnect block with ARMM stub and connectors

##### Ordering Information

| Description   | Dimensions (HxWxD)                                 | Catalog Number   |
|---|--|------------------|
| 50-pair disconnect block with ARMM stub and (2) 25-pair male Telco (RJ-21X) connectors. Cable stub: 20' | 10" x 3.38" x 2.88"<br>(254mm x 85.85mm x 73.15mm) | 6639 1 056-00/20 |

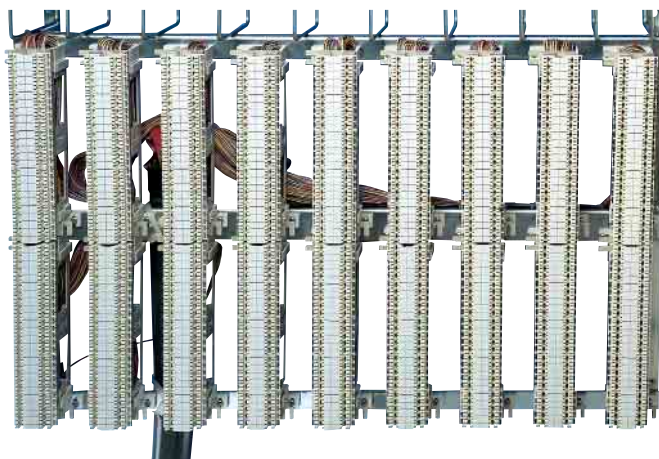


## Complementary Products

Voice Grade Solutions: 89D Style

89D Style Preterminated 50-Pair Blocks with Stubs

Disconnect Frame with ARMM Stub



900-pair disconnect frame with ARMM stub

### Features

- Incoming cable pairs of each block are preterminated to a 600- or 900-pair ARMM (24 AWG, CMR) cable
- Cable stubs exit through bottom of frame
- Frame is equipped with (18) 50-pair disconnect blocks mounted on 89D brackets
- Includes label holders and labels
- Mounts directly to wall or in standard 35.5" (901.7mm) equipment rack

### Ordering Information

| Description                                     | Dimensions (HxWxD)                        | Catalog Number   |
|---|---|------------------|
| <b>600-pair disconnect frame with ARMM stub</b> | 23" x 23" x 7"<br>(584mm x 584mm x 178mm) |                  |
| with 25' ARMM stub                              |   | 6639 1 600-00/25 |
| with 50' ARMM stub                              |   | 6639 1 600-00/50 |
| <b>900-pair disconnect frame with ARMM stub</b> | 23" x 35" x 7"<br>(584mm x 889mm x 178mm) |                  |
| with 25' ARMM stub                              |   | 6639 1 900-00/25 |
| with 50' ARMM stub                              |   | 6639 1 900-00/50 |



## Complementary Products

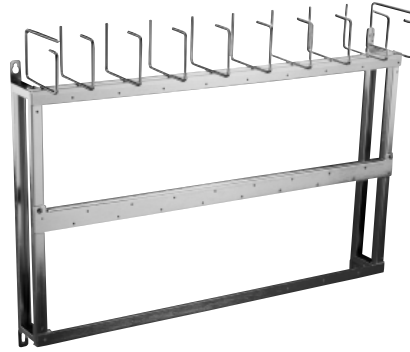
Voice Grade Solutions: 89D Style

### 89D Style Mounting Frames

These mounting frames are for 25-pair and 50-pair block systems only. They are specifically designed to accept 89D type brackets.



19" wide mounting frame for 25- and 50-pair block systems



35.5" wide mounting frame for 25- and 50-pair block systems

#### Ordering Information

| Description   | Dimensions (HxWxD)                                 | Catalog Number |
|---|--|----------------|
| <b>19" mounting frame</b> <i>Quantity: 1</i><br>Supports up to (10) 25- or 50-pair blocks on 89D brackets. Equipped with 6 jumper rings for cross-connect wire and/or patch cord routing    | 26.38" x 19.25" x 6.5"<br>(670mm x 589mm x 159mm)  |                |
| Without 89D brackets  |  | 6652 2 104-00  |
| With (10) 89D brackets  |  | 6652 2 104-10  |
| <b>23" mounting frame</b> <i>Quantity: 1</i><br>Supports up to (12) 25- or 50-pair blocks on 89D brackets. Equipped with 7 jumper rings for cross-connect wire and/or patch cord routing    | 26.38" x 23" x 6.5"<br>(670mm x 589.6mm x 159mm)   |                |
| Without 89D brackets  |  | 6652 2 108-00  |
| With (12) 89D brackets  |  | 6652 2 108-12  |
| <b>35.5" mounting frame</b> <i>Quantity: 1</i><br>Supports up to (18) 25- or 50-pair blocks on 89D brackets. Equipped with 10 jumper rings for cross-connect wire and/or patch cord routing | 26.38" x 35.5" x 6.5"<br>(670mm x 901.7mm x 159mm) |                |
| Without 89D brackets  |  | 6652 2 105-00  |
| With (18) 89D brackets  |  | 6652 2 105-18  |



## Complementary Products

Voice Grade Solutions: 89D Style

### 89D Style Termination Block Accessories



50-pair label holder



Clear dust cover  
(shown on 50-pair block)



Hinged dust cover  
(closed)



Hinged dust cover  
(right side open)



89D bracket

#### Ordering Information

| Description   | Dimensions (HxWxD)                                    | Catalog Number |
|---|---|----------------|
| <b>50-pair block center mount label holder</b><br><i>Quantity: 1</i><br>Snaps into center section of 50-pair block to cover cable side terminations   | 9.88" x 0.88"<br>(250.9mm x 22.4mm)                   | 6639 3 019-00  |
| <b>Clear dust cover</b> <i>Quantity: 1</i><br>Clear, protective plastic dust cover snaps over 50-pair block. Accepts adhesive paper label strip   | 10.06" x 2.5" x 1.38"<br>(255.5mm x 63.5mm x 35.05mm) | 6586 3 004-00  |
| <b>Paper labeling strip for 50-pair dust cover</b><br><i>Quantity: 1</i>  | 9.75" x 2.13"<br>(247.65mm x 54.1mm)                  | 6639 3 019-01  |
| <b>Hinged dust cover</b> <i>Quantity: 1</i><br>Designed for 50-pair block; left and right sides swing open independently for access; labeling areas inside both sides of cover; includes 2 snap-in legs and covers<br>Color: orange | 10.06" x 2.5" x 1.38"<br>(255.5mm x 63.5mm x 35.05mm) | 6639 2 004-00  |
| <b>89D bracket for 25- and 50-pair blocks</b><br><i>Quantity: 1</i><br>Standard 89D stand-off bracket mounts to mounting frame or directly to wall  | 10" x 3.38" x 1.5"<br>(254mm x 85.85mm x 38.1mm)      | 6639 3 016-00  |

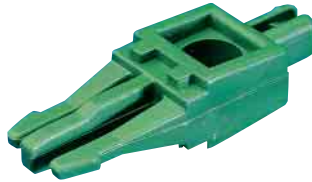




## Complementary Products

Voice Grade Solutions: 89D Style

### 89D Style Termination Block Accessories



Disconnect plug



Flat-top dummy plug

#### Ordering Information

| Description   | Catalog Number |
|---|----------------|
| <b>Disconnect plug</b> <i>Quantity: 1 (order in multiples of 100)</i><br>Color-coded plastic plugs plug into disconnect block to open a pair of contacts. Center hole for attaching ID tabs. Green <b>only</b>  | 6089 3 055-02  |
| <b>Flat-top dummy plugs</b> <i>Quantity: 1 (order in multiples of 100)</i><br>Color-coded, plastic dummy plugs designed to plug into disconnect block for quick identification of special circuits and to block port access. Surface for writing or attaching small adhesive stickers (not supplied). Center hole for attaching ID tabs |                |
| Red   | 6417 3 105-00  |
| White   | 6417 3 105-01  |
| Blue  | 6417 3 105-07  |



## Complementary Products

### Building Entrance Terminals: Fiber Wall Boxes

#### Indoor Fiber Distribution Terminal

ADC's OmniReach® Indoor Fiber Distribution Terminal (iFDT) provides Multiple Dwelling Unit (MDU) applications with a compact and secure family of enclosures by connecting fiber cables at MDUs. The IFDT products are designed to splice and terminate fibers in a range of sizes including 6, 12, 24, and 48 fibers.



6-Port



12-Port



24-Port



48-Port

#### Features and Benefits

- Integrated splice tray offers flexible splice management for individual or mass splicing
- Sealed enclosure protect fibers from dust, water spray, insects and other contaminants
- Dual-hinged design ensures separation of owner/client network segments
- NEMA-12 Rated
- Tested to GR-2898-CORE
- Front and rear layer maximizes wall space utilization for both splicing and interconnect
- Robust steel construction protects fibers against damage and ensures network reliability
- Slotted cable entrance ports allow for rapid cable installation and pass-through capability
- Cable management and routing limits bend radius and adds strain relief
- 216-Tool (can wrench), key lock or padlock offers flexible security options



# Complementary Products

## Building Entrance Terminals: Fiber Wall Boxes

|                         | IFDT-6             | IFDT-12            | IFDT-24            | IFDT-48            |
|-------------------------|--------------------|--------------------|--------------------|--------------------|
| <b>Fibers</b>           | 6                  | 12                 | 24                 | 48                 |
| <b>Parking Adapters</b> | 6                  | 12                 | 24                 | 48                 |
| <b>Splice Trays</b>     | 1/12f              | 1/12f              | 4/12f              | 8/12f              |
| <b>Grip Clamps</b>      | 1                  | 1                  | 1                  | 1                  |
| <b>Jumper Ports</b>     | 1                  | 3                  | 3                  | 3                  |
| <b>NEMA Rating</b>      | 12                 | 12                 | 12                 | 12                 |
| <b>Height</b>           | 7.0 in. (17.8 cm)  | 8.0 in. (20.3 cm)  | 18.5 in. (47.0 cm) | 32.0 in. (81.3 cm) |
| <b>Width</b>            | 12.0 in. (30.5 cm) | 14.0 in. (35.5 cm) | 13.0 in. (33.0 cm) | 13.0 in. (33.0 cm) |
| <b>Depth</b>            | 3.0 in. (7.6 cm)   | 5.0 in. (12.7 cm)  | 5.0 in. (12.7 cm)  | 5.0 in. (12.7 cm)  |
| <b>Color</b>            | CO White           | CO White           | CO White           | CO White           |

**Catalog Number**  
**FDT-**

| Enclosure Type |            | Max Capacity |          |
|----------------|------------|--------------|----------|
| Code           | Desc.      | w/Prkg       | w/o Prkg |
| A              | IFDT-6/12  | 6-Fiber      | 12-Fiber |
| B              | IFDT-12/24 | 12-Fiber     | 24-Fiber |
| C              | IFDT-24/48 | 24-Fiber     | 48-Fiber |
| E              | IFDT-48/96 | 48-Fiber     | 96-Fiber |

**Stub Length**

|     |          |
|-----|----------|
| 000 | 0 Feet   |
| 025 | 25 Feet  |
| 100 | 100 Feet |
| 200 | 200 Feet |
| 300 | 300 Feet |
| 500 | 500 Feet |

**Connector Type**

|   |        |
|---|--------|
| J | SC/APC |
|---|--------|

**Cable Type**

| Pigtails |                    |
|----------|--------------------|
| A        | Bare Rbn Pgtl Assy |
| C        | Pigtails (Colored) |

| Stubs |                       |
|-------|-----------------------|
| S     | Ribbon OSP w/Conn     |
| R     | Ribbon IFC w/Conn     |
| T     | Loose Tube OSP w/Conn |
| V     | Loose Tube IFC w/Conn |

**Splice Tray**

|   |                    |
|---|--------------------|
| 0 | No Tray            |
| 2 | Heat Shrink Fusion |
| 3 | Mechanical/Ribbon  |

**Fiber Count**

|    |           |
|----|-----------|
| 06 | 6 Fiber   |
| 12 | 12 Fibers |
| 24 | 24 Fibers |
| 48 | 48 Fibers |
| 96 | 96 Fibers |

**Pigtails**

|   |                |
|---|----------------|
| P | Pigtails (2mm) |
| X | No Pigtails    |

**Parking**

|   |            |
|---|------------|
| P | Parking    |
| N | No Parking |



## Complementary Products

### Building Entrance Terminals: Fiber Wall Boxes

#### Indoor Fiber Distribution Terminal

The ADC Indoor Fiber Distribution Terminal (IFDT) series provides Customer Premises Equipment applications with a compact and secure family of enclosures for connecting fiber cables within building entrance locations, communication closets, computer rooms and other indoor environments. The IFDT products are designed to splice and terminate fibers in a range of sizes including 6, 12, 24, 48, 72, and 96 fibers.

##### Features

- 12-Packs provide for high-density terminations and conserve wall space
- Integrated splice tray offers flexible splice management for individual or mass splicing
- Sealed enclosure protect fibers from dust, water spray, insects and other contaminants
- Dual-hinged design ensures separation of owner/client network segments
- Designed to NEMA-12
- Designed to GR-2898-CORE
- Front and rear layer maximizes wall space utilization for both splicing and interconnect
- Robust steel construction protects fibers against damage and ensures network reliability
- Slotted cable entrance ports allow for rapid cable installation and pass-through capability
- Cable management and routing limits bend radius and adds strain relief
- 216-Tool (can wrench), key lock or padlock offers flexible security options





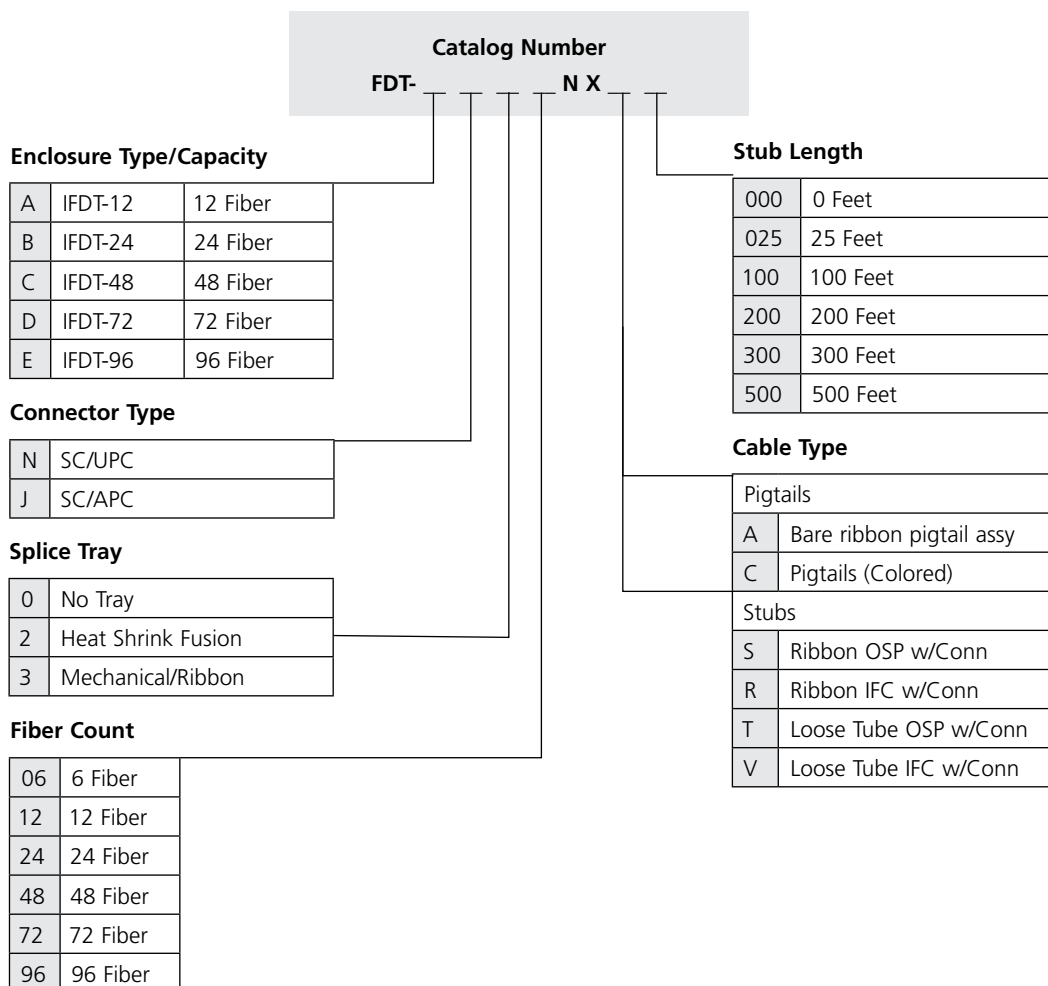
# Complementary Products

## Building Entrance Terminals: Fiber Wall Boxes

### Specifications

|                         | IFDT-12               | IFDT-24               | IFDT-48               | IFDT-72               | IFDT-96               |
|-------------------------|-----------------------|-----------------------|-----------------------|-----------------------|-----------------------|
| <b>Fibers (nominal)</b> | 6 and 12              | 24                    | 48                    | 72                    | 96                    |
| <b>Adapter Panels</b>   | 2 APLH                | 2 APLH                | 4 APLH                | 6 APLH                | 8 APLH                |
| <b>Splice Trays</b>     | 1/12f                 | 2/12f                 | 4/12f                 | 6/12f                 | 8/12f                 |
| <b>Cable Ports</b>      | 2 slotted             | 4 slotted             | 4 slotted             | 4 slotted             | 4 slotted             |
| <b>Grip Clamps</b>      | 2                     | 4                     | 4                     | 4                     | 4                     |
| <b>Jumper Ports</b>     | 2 slotted             | 2 slotted             | 2 slotted             | 2 slotted             | 2 slotted             |
| <b>NEMA Rating</b>      | 12                    | 12                    | 12                    | 12                    | 12                    |
| <b>Height</b>           | 7.0 in.<br>(17.8 cm)  | 8.0 in.<br>(20.3 cm)  | 18.5 in.<br>(47.0 cm) | 24.5 in.<br>(62.2 cm) | 32.0 in.<br>(81.2cm)  |
| <b>Width</b>            | 12.0 in.<br>(30.5 cm) | 14.0 in.<br>(35.5 cm) | 13.0 in.<br>(33.0 cm) | 13.0 in.<br>(33.0 cm) | 13.0 in.<br>(33.0 cm) |
| <b>Depth</b>            | 3.0 in.<br>(7.6 cm)   | 5.0 in.<br>(12.7 cm)  | 5.0 in.<br>(12.7 cm)  | 5.0 in.<br>(12.7 cm)  | 5.0 in.<br>(12.7 cm)  |
| <b>Weight (Empty)</b>   | 5.0 lbs<br>(2.3 kg)   | 7.0 lbs<br>(15.4 kg)  | 12.8 lbs (28.2 kg)    | 16.0 lbs<br>(35.2 kg) | 20.0 lbs<br>(44 kg)   |
| <b>Color</b>            | CO White              | CO White              | CO White              | CO White              | CO White              |

6/10 • 102094AE TrueNet® Structured Cabling





## Complementary Products

### Building Entrance Terminals: Fiber Wall Boxes

#### Outdoor Fiber Distribution Terminal 24 (OFDT-24)

The Outdoor Fiber Distribution Terminals 24 are designed to terminate, splice and interconnect fiber optic cables in an outdoor environment. This terminal may be adapted to Fiber-to-The-Premise (FTTP) Multiple Dwelling Unit (MDU) applications and is particularly suited for garden style MDU buildings. The enclosure is mounted to the exterior surface of a dwelling and connects the distribution cable and drops routed to individual living units. The cables meet at a central connector field that includes termination for the distribution cable and parking for the drop cables. The cabinet may be configured with splice trays for splicing the cable to connector pigtails. The OFDT-24 may be pre-terminated on the distribution side with outside plant cable stubs so that the unit is quickly connected to the plant. The OFDT-24 may also be pre-wired with pigtails on the drop side so that individual drops routed into the unit can be spliced to the connectorized pigtails.



#### Features and Benefits

- Accommodates smaller fiber counts; 6-, 12- and 24-fiber
- Eliminates need for transitional NEMA box that provides for mini-ducts
- Liquid tight fittings offer cost savings
- Aesthetic benefits to MDU building owners
- Supplied with parking, pigtails and splice tray
- Wall-mount; efficient use of wall space
- Cable termination and splicing
- Complete connector access
- Lockable 216 tool/padlock offers flexible security options
- Environmental enclosure provides heavy-duty protection from wind, dust, rain, and other contaminants
- Aluminum welded construction provides strength and resists corrosion
- Lightweight structure provides for easy installation
- Cable entrance ports seal cable at entry
- Cable management and routing limits radius and adds strain relief
- Standard stub lengths of 100, 300, 500, and 1000 feet



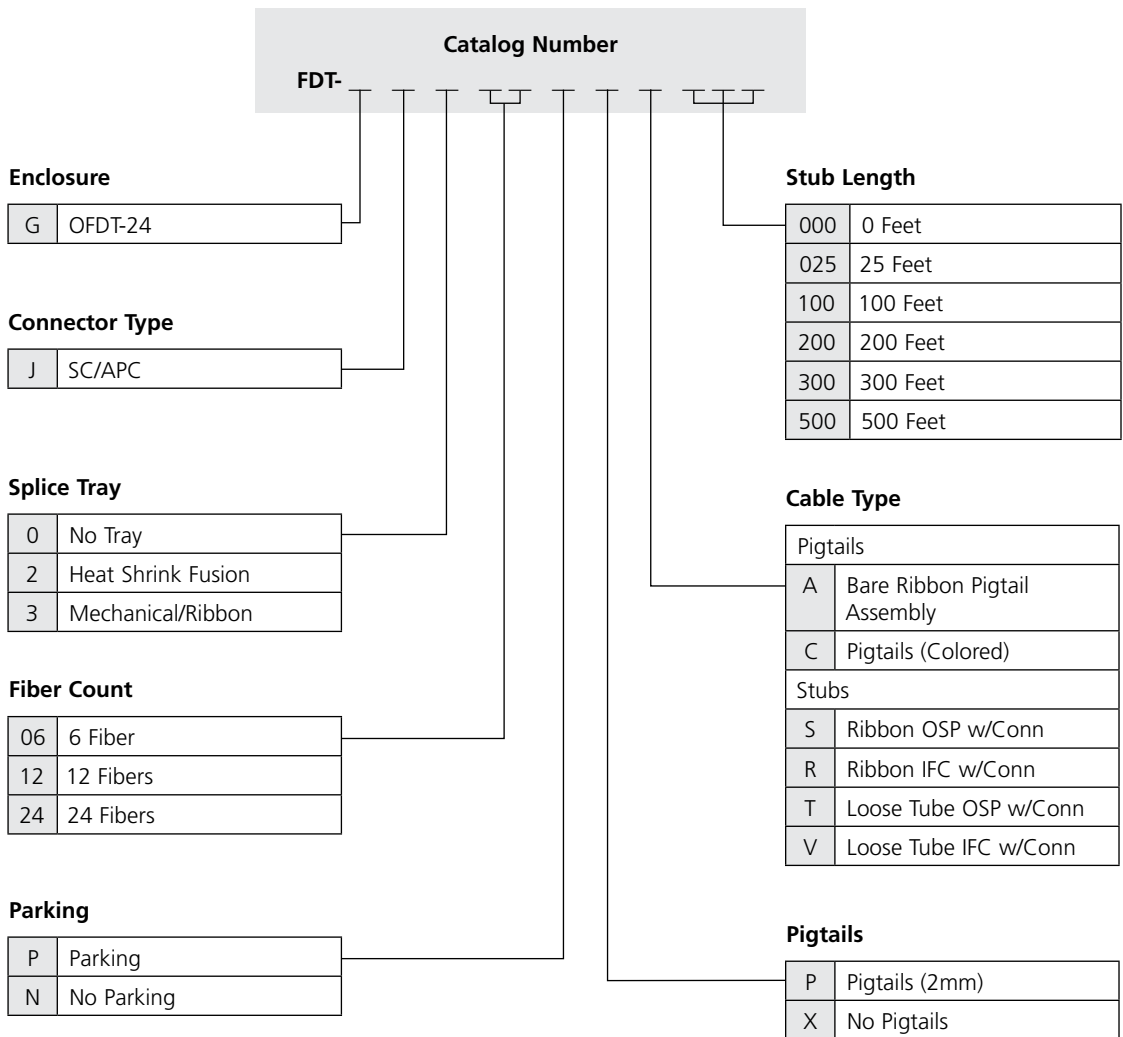
# Complementary Products

## Building Entrance Terminals: Fiber Wall Boxes

### Specifications

|                            |                        |
|----------------------------|------------------------|
| <b>Height:</b>             | 13.5" (35.0 cm)        |
| <b>Width:</b>              | 19.0" (49.0 cm)        |
| <b>Depth:</b>              | 8.0" (20.0 cm)         |
| <b>Weight (Empty):</b>     | 14 lbs (31 kg)         |
| <b>Fiber Terminations:</b> | 6, 12, 24              |
| <b>Parking Adapters:</b>   | 6, 12, 24              |
| <b>Splice Trays:</b>       | 3                      |
| <b>Cable Ports:</b>        | 2 in bottom; 1 in rear |
| <b>Color:</b>              | Beige                  |

### Ordering Information





## Complementary Products

### Building Entrance Terminals: Fiber Wall Boxes

#### Outdoor Fiber Distribution Terminal 48 (oFDT-48)

The ADC Outdoor Fiber Distribution Terminal 48F (oFDT-48) is designed to terminate, splice and interconnect fiber optic cables in an outdoor environment. This terminal may be adapted to Fiber-to-The-Premise (FTTP) Multiple Dwelling Unit (MDU) applications by mounting the enclosure to the exterior surface of a dwelling and connecting between the distribution cable and drops routed to individual living units. The oFDT-48 is typically divided into two side-by-side sections with distribution cable routed into one side and drop cable routed into the other side. The cables meet at a central connector field that includes termination for the distribution cable and parking for the drop cables. Each side of the cabinet may be configured with splice trays for splicing the cable to connector pigtails. The oFDT-48 may be pre-terminated on the distribution side with outside plant cable stubs so that the unit is quickly connected to the plant. The oFDT-48 may be pre-wired with pigtails on the drop side so that individual drops routed into the unit can be spliced to the connectorized pigtails.



#### Features and Benefits

- Environmental enclosure provides heavy-duty protection from wind, rain, and other contaminants
- Aluminum welded construction provides strength and resists corrosion
- Flexible design accommodates 24 and 48 fibers including termination and parking
- Lightweight structure provides for easy installation
- Lockable tool or padlock offers flexible security options
- Cable entrance ports seal cable at entry
- Cable management and routing limits radius and adds strain relief





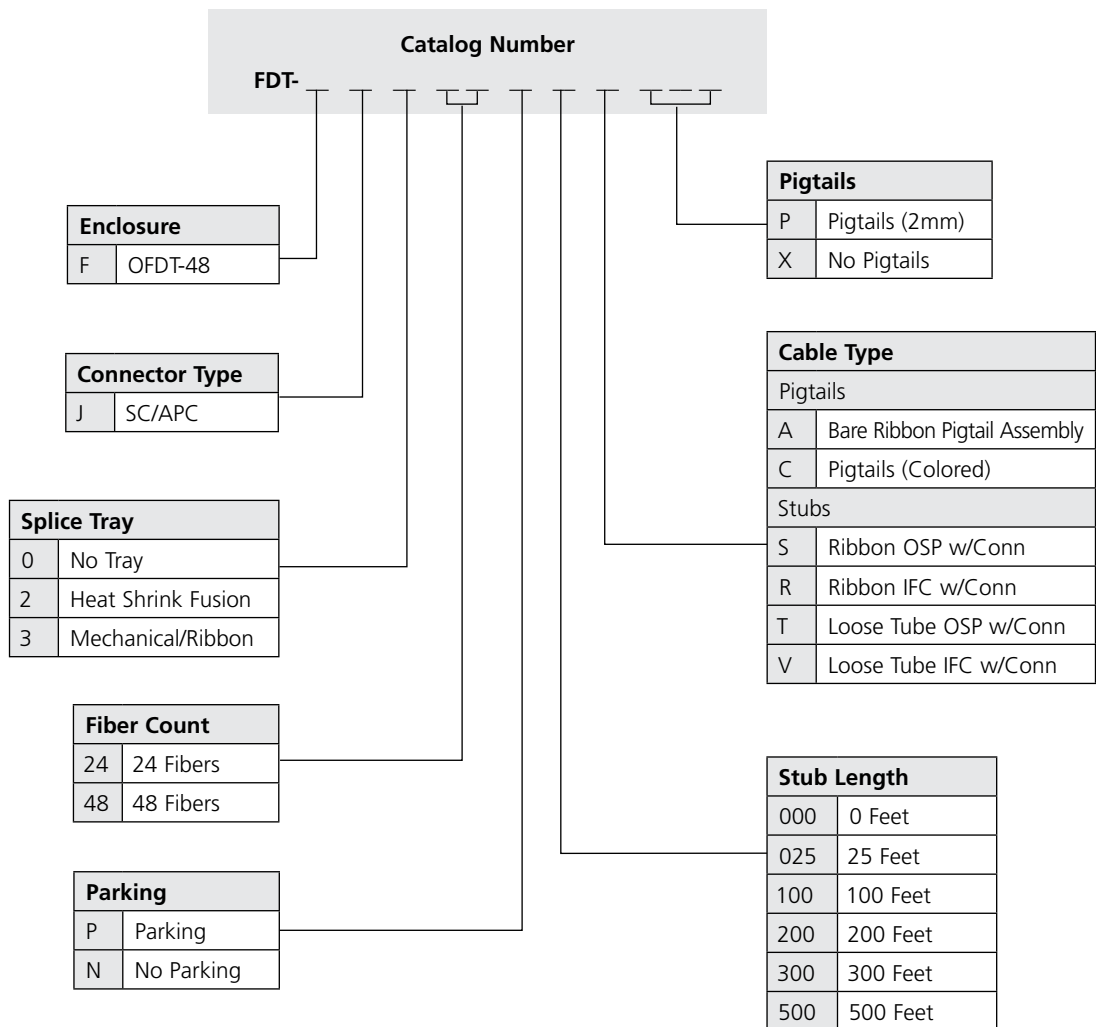
# Complementary Products

## Building Entrance Terminals: Fiber Wall Boxes

### Specifications

|                           |                  |
|---------------------------|------------------|
| <b>Height</b>             | 22.0 in (56 cm)  |
| <b>Width</b>              | 20.0 in (51 cm)  |
| <b>Depth</b>              | 10.0 in (25 cm)  |
| <b>Weight (Empty)</b>     | 21.0 lbs (46 kg) |
| <b>Fiber Terminations</b> | Up to 48         |
| <b>Parking Adapters</b>   | 12, 24 or 48     |
| <b>Splice Trays</b>       | 1 to 4/side      |
| <b>Cable Ports</b>        | 2 on bottom      |
| <b>Color</b>              | Beige            |

### Ordering Information





## Complementary Products

### Building Entrance Terminals: Fiber Wall Boxes

#### Fiber Splitter Box (FSB)

ADC's OmniReach® Fiber Splitter Box (FSB) enables customers to accelerate their FTTX deployments more effectively and is an ideal solution when deploying FTTX networks in non-residential Multiple Tenant Unit (MTU) and residential Multiple Dwelling Unit (MDU) applications.

These wall boxes provide a small footprint for splitting, splicing and terminating and are environmentally rated for indoor or outdoor use. Available in three sizes, each box is equipped with a 12-fiber splice tray allowing for an input splicing option. FSB's accept standard plug and play (PNP) splitters (same as in the Fiber Distribution Hub 3000 or FDH 3000) and splitters can be easily added after the wall box has been installed. FSB's accommodate 1x4, 1x8, 1x16 and 1x32 splitters; up to 72 fibers.

#### FSB-16 - Indoor/Outdoor Enclosure



##### Features and Benefits

- Accommodates up to 16 ports
- Rated for indoor or outdoor use
- Traditional swing frame design allows for access to the back section of the wall box
- Splitter can be easily installed after wall box install
- Standard 12-fiber splice tray allows for input splicing option
- Output pigtails can either be stored internally or routed externally for MDU-ONT connection
- Accepts standard PNP splitter (same as FDH 3000)

##### Specifications

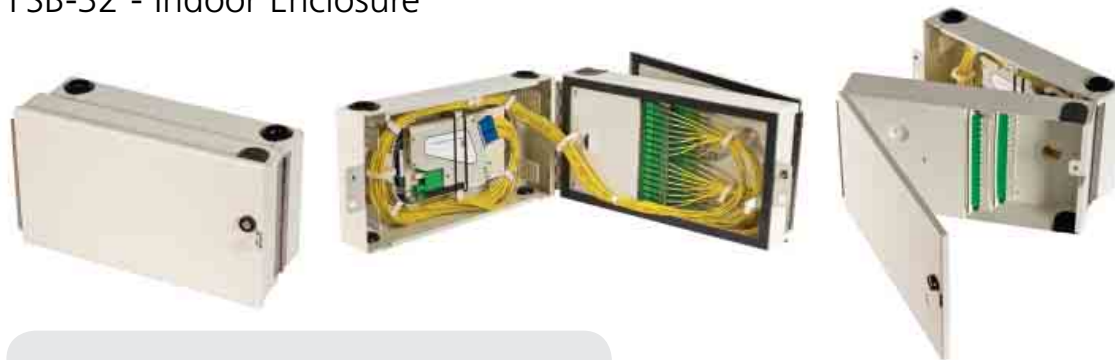
|                            |                |
|----------------------------|----------------|
| <b>Installation Type:</b>  | Indoor/Outdoor |
| <b>Fiber Count (Full):</b> | 16             |
| <b>Parking Ports:</b>      | 0              |
| <b>Splitter/WDM Ports:</b> | 1              |
| <b>Splice Trays:</b>       | 1/12f          |
| <b>NEMA Rating:</b>        | 4 and 12       |
| <b>Height:</b>             | 9"             |
| <b>Width:</b>              | 9"             |
| <b>Depth:</b>              | 3.5"           |



## Complementary Products

### Building Entrance Terminals: Fiber Wall Boxes

#### FSB-32 - Indoor Enclosure



##### Features and Benefits

- Dual hinge design creates separation between rear splitter section and front customer side access
- Splitters can be easily installed after wall box install allowing for separate purchase
- Standard 12-fiber splice tray allows for input splicing option
- Accommodates up to 32 splitter ports for one splitter module
- Dual hinge provides small footprint on the wall while maintaining excellent hand access to connectors
- Accepts standard PNP splitter (same as FDH 3000)

##### Specifications

|                            |        |
|----------------------------|--------|
| <b>Installation Type:</b>  | Indoor |
| <b>Fiber Count (Full):</b> | 32     |
| <b>Parking Ports:</b>      | 0      |
| <b>Splitter/WDM Ports:</b> | 1      |
| <b>Splice Trays:</b>       | 1/12f  |
| <b>NEMA Rating:</b>        | 12     |
| <b>Height:</b>             | 8"     |
| <b>Width:</b>              | 13"    |
| <b>Depth:</b>              | 5"     |

#### FSB-72 - Outdoor Enclosure



##### Features and Benefits

- Traditional swing frame design allows for access to the back section of the wall box
- Splitter can be easily installed after wall box install
- Standard 12-fiber splice tray allows for input splicing option
- Accommodates up to 3 PNP splitter modules
- 72 port capacity with built-in 32-port parking
- Easily wall mounts to buildings
- Accepts standard PNP splitter (same as FDH 3000)

##### Specifications

|                            |         |
|----------------------------|---------|
| <b>Installation Type:</b>  | Outdoor |
| <b>Fiber Count (Full):</b> | 72      |
| <b>Parking Ports:</b>      | 32      |
| <b>Splitter/WDM Ports:</b> | 3       |
| <b>Splice Trays:</b>       | 5/12f   |
| <b>NEMA Rating:</b>        | 4       |
| <b>Height:</b>             | 13"     |
| <b>Width:</b>              | 19"     |
| <b>Depth:</b>              | 10"     |



## Complementary Products

### Building Entrance Terminals: Fiber Wall Boxes

## Building Entrance Terminals: Fiber Wall Boxes

Catalog Number

FSB-

1

Configuration

S

Standard

2

Enclosure Type

| Code | Description       | Capacity | Size (HxWxD) |
|------|-------------------|----------|--------------|
| B    | Indoor FSB-32     | 32-Fiber | 8"x13"x5"    |
| G    | Outdoor FSB-72    | 72-Fiber | 13"x19"x8"   |
| H    | Indr/Outdr FSB-16 | 16-Fiber | 9"x9"x3.5"   |

3

Connector Type

J

SC/APC

4

Splice Tray (Feeder Side)

2

Heat Shrink Fusion

3

Mechanical/Ribbon

0

No Splice Tray

5

Fiber Count (Distribution)

|    |           |
|----|-----------|
| 12 | 12 Fibers |
| 16 | 16 Fibers |
| 32 | 32 Fibers |
| 48 | 48 Fibers |
| 72 | 72 Fibers |

6

Splitter Type Installed

|   |                     |
|---|---------------------|
| 0 | None Installed      |
| A | 1x32 Standard       |
| C | 1x16 Standard       |
| G | 2x32 Standard Power |
| J | 1x8 Standard        |
| L | Dual 1x8 Standard   |
| M | Dual 1x16 Standard  |
| N | 1x4 Standard        |
| P | 2x16 Standard       |
| U | Dual 1x4 Standard   |

7

Splitter Qty Installed

|   |                     |
|---|---------------------|
| 0 | None                |
| 1 | One (1) Installed   |
| 2 | Two (2) Installed   |
| 3 | Three (3) Installed |

11

Key Locks

|   |                            |
|---|----------------------------|
| 0 | None (Pad Lock Ready)      |
| A | Front Lock 1, Rear Lock 1  |
| B | Front Lock 1, Rear Lock 2  |
| C | Front Lock 1, No Rear Lock |
| D | Rear Lock 2, No Front Lock |

10

Feeder Fiber Count

|   |          |
|---|----------|
| 0 | No Stub  |
| 2 | 2 Fibers |
| 4 | 4 Fibers |
| 6 | 6 Fibers |
| 8 | 8 Fibers |

9

Feeder Cable Length

|     |          |
|-----|----------|
| 000 | 0 Feet   |
| 025 | 25 Feet  |
| 100 | 100 Feet |
| 200 | 200 Feet |
| 300 | 300 Feet |
| 500 | 500 Feet |

8

Cable Type (Feeder Cable)

Adapters

|   |  |
|---|--|
| 0 | Adapters Only<br>(No Pigtail for Feeder) |
|---|--|

Pigtails

|   |                              |
|---|------------------------------|
| A | Splice Ribbon Pigtail Assy   |
| C | Splice Pigtails (900 Micron) |

Stubs

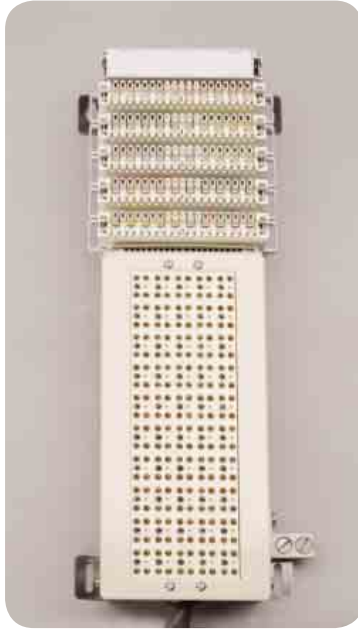
|   |                      |
|---|----------------------|
| S | Ribbon OSP Cable     |
| R | Ribbon IFC Cable     |
| T | Loose Tube OSP Cable |
| V | Loose Tube IFC Cable |
| M | 900um IFNR Cable     |



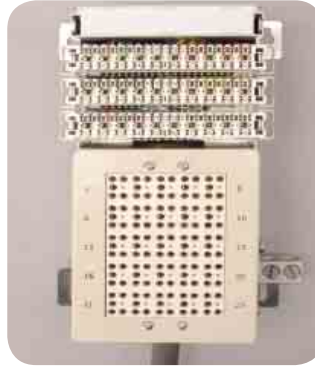
## Complementary Products

### Building Entrance Terminals: Protection Devices

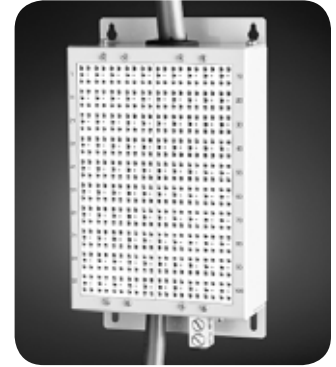
#### High-Density 5-Pin Protection



50-pair 5-pin protection  
building entrance terminal



25-pair 5-pin protection  
building entrance terminal



100-pair 5-pin protection only  
building entrance terminal with  
top and bottom stubs

#### Features

- High-density primary protection allows up to eighteen (double-sided) 100-pair units to be mounted in a standard 7-foot, 19-inch rack
- 26 AWG cable stub is provided for splicing to the incoming 24 AWG cable
- Building entrance terminals available with 5-pin protectors in 25-, 50- and 100-pair units
- 5-pin protectors are rated 300 volts
- Allow “look-both-ways” testing and monitoring without removing wires or protection
- Numerous labeling options allow comprehensive marking
- Variety of mounting hardware options
- UL 497 listed
- 100% compliant with Telcordia TR-NWT-000937

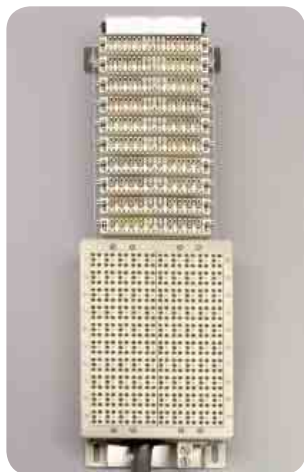
Ordering information follows on the next page



## Complementary Products

Building Entrance Terminals: Protection Devices

### High-Density 5-Pin Protection



100-pair 5-pin protection building entrance terminal with bottom entrance stub

#### Ordering Information

| Description  | Dimensions (HxWxD)                                      | Catalog Number*  |
|--|---|------------------|
| <b>25-pair</b> 5-pin protection building terminal, <b>bottom entrance stub</b> <i>Quantity: 1</i>                            | 8.75" x 6" x 4.88"<br>(222.3mm x 152.4mm x 123.9mm)     | 6649 1 110-01/XX |
| <b>50-pair</b> 5-pin protection building entrance terminal, <b>bottom entrance stub</b> <i>Quantity: 1</i>                   | 14" x 6" x 4.88"<br>(355.6mm x 152.4mm x 123.9mm)       | 6649 1 210-01/XX |
| <b>100-pair</b> 5-pin protection building entrance terminal, <b>bottom entrance stub</b> <i>Quantity: 1</i>                  | 19.88" x 6.06" x 4.88"<br>(505mm x 153.9mm x 123.9mm)   |                  |
| 5-pin protectors included  |   | 6649 1 310-01/XX |
| 5-pin protectors included; (4) 25-pin Telco (RJ-21X) connectors mounted on back for fast installation                        |   | 6649 1 313-01/XX |
| <b>100-pair</b> 5-pin protection building entrance terminal, <b>top entrance stub</b> <i>Quantity: 1</i>                     | 19.88" x 6.06" x 4.88"<br>(505mm x 153.9mm x 123.9mm)   | 6649 1 310-03/XX |
| <b>100-pair</b> 5-pin protection building entrance terminal, <b>bottom rear entrance stub</b> <i>Quantity: 1</i>             | 19.88" x 6.06" x 4.88"<br>(505mm x 153.9mm x 123.9mm)   |                  |
| 5-pin protectors included  |   | 6649 1 310-02/XX |
| 5-pin protectors included; (4) 25-pin Telco (RJ-21X) connectors mounted on back for fast installation                        |   | 6649 1 313-02/XX |
| <b>100-pair</b> 5-pin protection building entrance terminal, <b>top rear entrance stub</b> <i>Quantity: 1</i>                | 19.88" x 6.06" x 4.88"<br>(505mm x 153.9mm x 123.9mm)   | 6649 1 310-04/XX |
| <b>100-pair</b> 5-pin protection building entrance terminal, protection only, <b>bottom and top stubs</b> <i>Quantity: 1</i> | 10.75" x 6.06" x 2.75"<br>(227.1mm x 153.9mm x 69.85mm) | 6649 1 316-05/XX |

\*Replace XX with:

25 = 25'

50 = 50'



## Complementary Products

### Building Entrance Terminals: Protection Devices

#### 5-Pin Indoor and Outdoor Enclosed Building Entrance Terminals



100-pair indoor enclosed 5-pin building entrance terminal with doors open



100-pair 5-pin indoor enclosed building entrance terminal with doors closed—with RJ-21X output shown

#### Features

- 5-pin protection devices safeguard valuable cable plant and equipment from voltage surges and spikes
- Lockable metal enclosure with Telco override cover and a splicing chamber with the choice of either 710 or MS<sup>2</sup> splice connectors
- 5-pin protectors are rated 300 volts
- 10-pair Series 2 disconnect block output field provided for cross-connection, “look-both-ways” testing and monitoring without removing wires or protectors
- 25-pair female Telco (RJ-21X) connectors available on indoor units
- Lightweight, compact and fully stackable
- Instructions, template and mounting hardware included to mount the terminal directly to a wall
- UL 497 listed
- 100% compliant with Telcordia TR-NWT-000937

MS<sup>2</sup> is a registered trademark of 3M

Ordering information follows on the next page



# Complementary Products

## Building Entrance Terminals: Protection Devices

### 5-Pin Indoor and Outdoor Enclosed Building Entrance Terminals

#### Ordering Information

| Description  | Dimensions (HxWxD)  | Catalog Number |
|--|---|----------------|
| <b>25-pair indoor</b> enclosed 5-pin building entrance terminal <i>Quantity: 1</i>   | 7.5" x 15.5" x 5.4"<br>(190.50mm x 393.7mm x 137.2mm)       |                |
| 710 splice connector input and RJ-21X optional output                                |   | 6649 1 430-09  |
| MS <sup>®</sup> splice connector input and RJ-21X optional output                    |   | 6649 1 470-09  |
| <b>25-pair outdoor</b> enclosed 5-pin building entrance terminal <i>Quantity: 1</i>  | 11.35" x 10.65" x 6.08"<br>(288.29mm x 270.15mm x 154.43mm) |                |
| 710 splice connector input   |   | 6649 1 720-00  |
| MS <sup>®</sup> splice connector input   |   | 6649 1 760-00  |
| <b>50-pair indoor</b> enclosed 5-pin building entrance terminal <i>Quantity: 1</i>   | 11.25" x 15.63" x 5.38"<br>(285.75mm x 397mm x 136.65mm)    |                |
| 710 splice connector input   |   | 6649 1 530-00  |
| MS <sup>®</sup> splice connector input   |   | 6649 1 570-00  |
| 710 splice connector input and RJ-21X optional output                                |   | 6649 1 530-09  |
| MS <sup>®</sup> splice connector input and RJ-21X optional output                    |   | 6649 1 570-09  |
| <b>50-pair outdoor</b> enclosed 5-pin building entrance terminal <i>Quantity: 1</i>  | 13.88" x 19.63" x 6.38"<br>(352.55mm x 499mm x 162mm)       |                |
| 710 splice connector input   |   | 6649 1 820-00  |
| MS <sup>®</sup> splice connector input   |   | 6649 1 860-00  |
| <b>100-pair indoor</b> enclosed 5-pin building entrance terminal <i>Quantity: 1</i>  | 11.25" x 18.25" x 5.38"<br>(285.75mm x 463.55mm x 136.65mm) |                |
| 710 splice connector input   |   | 6649 1 630-00  |
| MS <sup>®</sup> splice connector input   |   | 6649 1 670-00  |
| 710 splice connector input and RJ-21X optional output                                |   | 6649 1 630-09  |
| MS <sup>®</sup> splice connector input and RJ-21X optional output                    |   | 6649 1 670-09  |
| <b>100-pair outdoor</b> enclosed 5-pin building entrance terminal <i>Quantity: 1</i> | 13.88" x 19.63" x 6.38"<br>(352.55mm x 499mm x 162mm)       |                |
| 710 splice connector input   |   | 6649 1 920-00  |
| MS <sup>®</sup> splice connector input   |   | 6649 1 960-00  |

Other configurations available; please contact ADC Technical Assistance Center  
MS<sup>®</sup> is a registered trademark of 3M





## Complementary Products

### Building Entrance Terminals: Protection Devices

#### 10-Pair Magazine Protection



100-pair magazine protection  
building entrance terminal bottom  
entrance stub



50-pair magazine protection  
building entrance terminal bottom  
entrance stub



25-pair magazine protection  
building entrance terminal bottom  
entrance stub

#### Features

- High-density primary protection
- Solid-state protection devices safeguard valuable cable plant and equipment from voltage surges and spikes
- Protector units are solid-state (320V median voltage rating) and equipped with individual fail-safe devices
- Wall or rack mount magazine protection building entrance terminals for protection of 25-, 50- and 100-pairs
- Each building entrance terminal equipped with solid-state protectors and a 26 AWG stub cable for splicing to the incoming 24 AWG cable, providing a built-in fuse link
- A 10-pair connector block (gray) field holds the protection magazines; connect block field is internally wired with 24 AWG cable to the disconnect block field
- A 10-pair disconnect block (white) field is provided for cross-connection, patching, "look-both-ways" testing, circuit monitoring, circuit disconnecting and marking without having to remove the protection magazines or wires
- Available with stubs that exit through the bottom, top or rear of the terminal
- UL 497 listed
- 10-pair protection magazine assemblies snap into 10-pair blocks
- 100% compliant with Telcordia TR-NWT-000937
- Mounting hardware is included for mounting directly to a wall or on back mount frames or support bars

Ordering information follows on the next page



## Complementary Products

### Building Entrance Terminals: Protection Devices

#### 10-Pair Magazine Protection

##### Ordering Information

| Description   | Dimensions (HxWxD)   | Catalog Number*  |
|---|--|------------------|
| <b>25-pair</b> magazine protection building entrance terminal, bottom entrance stub<br><i>Quantity: 1</i> | 6.25" x 5.75" x 5.06"<br>(158.75mm x 146.05mm x 128.52mm)  | 6659 1 025-32/XX |
| <b>50-pair</b> magazine protection building entrance terminal, bottom entrance stub<br><i>Quantity: 1</i> | 9.81" x 5.75" x 5.06"<br>(249.17mm x 146.05mm x 128.52mm)  | 6637 1 320-18/XX |
| <b>100-pair</b> magazine protection building entrance terminal<br><i>Quantity: 1</i>                      | 18.56" x 5.75" x 5.06"<br>(471.42mm x 146.05mm x 128.52mm) |                  |
| Bottom entrance stub  |  | 6637 1 320-19/XX |
| Bottom rear entrance stub   |  | 6659 1 132-87/XX |
| Top entrance stub   |  | 6659 1 132-48/XX |

\*Replace XX with:

25 = 25'

50 = 50'

Other configurations available; please contact ADC Technical Assistance Center

6/10 • 102094AE TrueNet® Structured Cabling



## Complementary Products

### Building Entrance Terminals: Protection Devices

#### 10-Pair Magazine Protection Indoor and Outdoor Enclosed Building Entrance Terminals



100-pair indoor enclosed magazine building entrance terminal with doors open



100-pair indoor enclosed magazine building entrance terminal with doors closed—RJ-21X output shown

#### Features

- Enclosed 10-pair magazine protection building entrance terminals for the overvoltage protection of 100 pairs
- Protector units are solid-state (320 volt median voltage rating) and equipment with individual fail-safe devices
- Lockable metal enclosure with Telco override cover, a splicing chamber with the choice of either 710 or MS2® splice connectors and a ground strap
- 10-pair connect block field holds the protection magazines
- 10-pair Series 2 disconnect block output field provided for cross-connection, “look-both-ways” testing and monitoring without removing wires or protectors
- 25-pair female Telco (RJ-21X) connectors available on indoor units
- Lightweight, compact and fully stackable
- Instructions, template and mounting hardware included to mount the terminal directly to a wall
- UL 497 listed
- 100% compliant with Telcordia TR-NWT-000937

MS2® is a registered trademark of 3M

Ordering information follows on the next page



## Complementary Products

### Building Entrance Terminals: Protection Devices

#### 10-Pair Magazine Protection Indoor and Outdoor Enclosed Building Entrance Terminals

##### Ordering Information

| Description   | Dimensions (HxWxD)  | Catalog Number |
|---|---|----------------|
| <b>100-pair indoor</b> enclosed 10-pair magazine building entrance terminal<br><i>Quantity: 1</i> | 11.25" x 18.25" x 5.38"<br>(285.75mm x 463.55mm x 136.65mm) |                |
| 710 splice connector input  |   | 6659 1 132-77  |
| MS <sup>2</sup> ® splice connector input  |   | 6659 1 132-78  |
| 710 splice connector input and RJ-21X optional output   |   | 6659 1 132-79  |
| MS <sup>2</sup> ® splice connector input and RJ-21X optional output                               |   | 6659 1 132-80  |

Other configurations available; please contact ADC Technical Assistance Center  
MS<sup>2</sup>® is a registered trademark of 3M

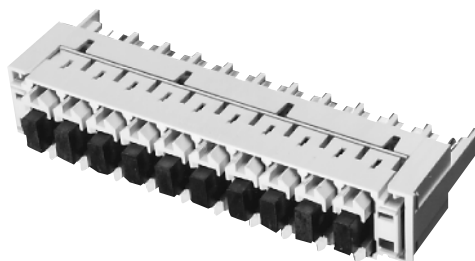


## Complementary Products

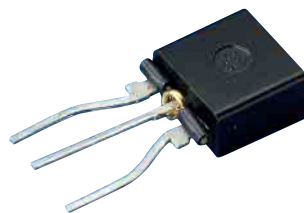
### Building Entrance Terminals: Protection Devices

#### 10-Pair Protection Magazine with Fail-Safe

The 10-pair solid-state protection magazine with fail-safe is a high-density protection solution, providing primary overvoltage protection. The magazine is loaded with 320V solid-state protectors and snaps into Series 2 10-pair connect or disconnect termination modules. The three-chip balanced solid-state device meets balance requirements of GTS 8700 and GR 974. It is UL 497 listed.



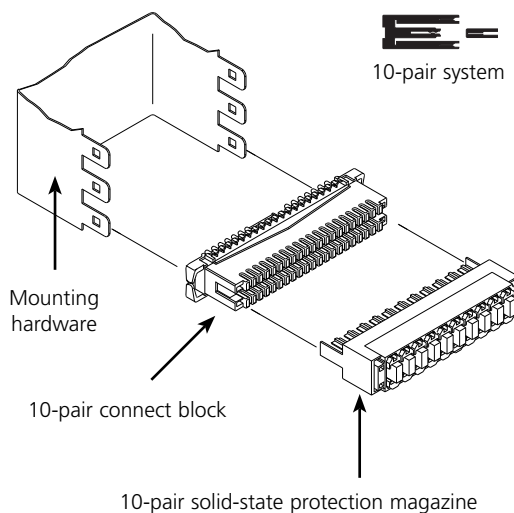
10-pair magazine, 10-pair system



Solid-state protector with fail-safe

#### Specifications

|  |           |
|--|-----------|
| <b>Median voltage rating:</b>                        | 320V      |
| <b>Peak off-state voltage:</b>                       | 270V      |
| <b>Switching voltage:</b>                            | 350V      |
| <b>On-state voltage:</b>                             | 8V        |
| <b>Leakage current:</b>                              | 5 $\mu$ A |
| <b>Switching current:</b>                            | 800mA     |
| <b>On-state current:</b>                             | 2.2A      |
| <b>Holding current:</b>                              | 150mA     |
| <b>Off-state capacitance:</b>                        | 60pF      |
| <b>Peak pulse current @2x10<math>\mu</math>s:</b>    | 250A      |
| <b>Peak pulse current @8x20<math>\mu</math>s:</b>    | 250A      |
| <b>Peak pulse current @10x160<math>\mu</math>s:</b>  | 150A      |
| <b>Peak pulse current @10x560<math>\mu</math>s:</b>  | 100A      |
| <b>Peak pulse current @10x1000<math>\mu</math>s:</b> | 80A       |



#### Ordering Information

| Description  | Dimensions (HxWxD)                                    | Catalog Number |
|--|---|----------------|
| <b>10-pair solid state magazine with fail safe</b><br><i>Quantity: 1</i><br>320V primary overvoltage protection; assembly consists of (1) 10-pair protection magazine fully loaded with (1) 320V solid-state protectors. Snaps into 10-pair connect or disconnect blocks mounted in grounded back mount frame<br><i>Extends 1.25" (31.75mm) from face of block</i> | 0.88" x 4.44" x 1.88"<br>(22.23mm x 112.8mm x 47.8mm) | 6659 2 053-09  |
| <b>Solid-state protector with fail-safe,</b><br><i>Quantity: 1</i><br>320V nominal clamping voltage; inserts into 10-pair protection magazine  |   | 6659 2 060-03  |



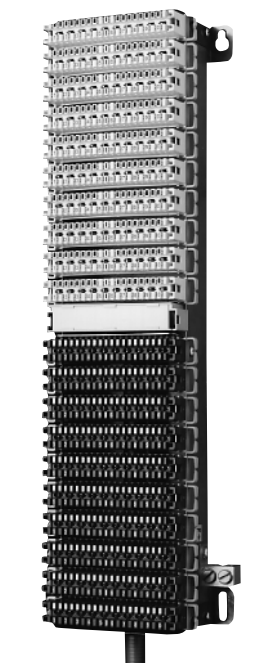
## Complementary Products

### Building Entrance Terminals: Protection Devices

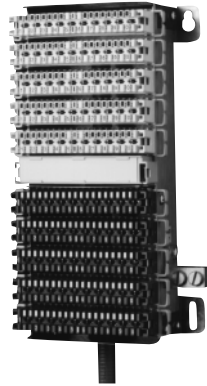
#### Single-Pair Protectors

The ComProtect™ single-pair protector system is a solid-state system that features an open contact design. The open contact design provides additional security because the circuit remains open until a single-pair protection device is inserted. Single-pair protectors are available in a variety of voltages, and are conveniently packaged in groups of ten with a ground bar. This system uses a switching block with a normally open contact design.

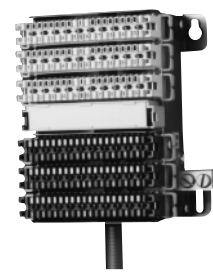
The open contact feature offers additional security. If a protection device is removed, the circuit is opened and the outside cable is automatically disconnected from the inside wire.



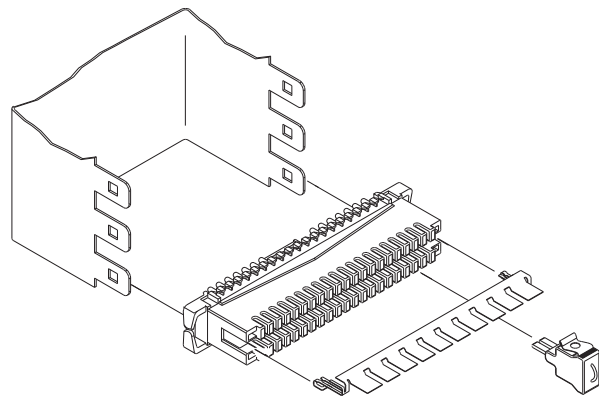
100-pair, single-pair system



50-pair, single-pair system



25-pair, single-pair system



Ordering information follows on the next page



## Complementary Products

### Building Entrance Terminals: Protection Devices

#### Single-Pair Protectors

##### Ordering Information

| Description  | Dimensions (HxWxD)                                    | Catalog Number   |
|--|---|------------------|
| <b>Single-pair system building entrance terminals</b><br>UL 497 listed<br>26 AWG stub for splicing to incoming 24 AWG cable. Lower switching block field accepts single-pair protection devices. Upper disconnect block field provides direct patching, cross-connection and "look-both-ways" testing <i>Quantity: 1</i> |   |                  |
| <b>25-pair building entrance terminal, single-pair system</b>  | 6.25" x 5.75" x 5.06"<br>(158.7mm x 146mm x 128.6mm)  |                  |
| 25' stub   |   | 6659 1 025-20/25 |
| 50' stub   |   | 6659 1 025-20/50 |
| <b>50-pair building entrance terminal, single-pair system</b>  | 9.81" x 5.75" x 5.06"<br>(249.2mm x 146mm x 128.6mm)  |                  |
| 25' stub   |   | 6659 1 050-43/25 |
| 50' stub   |   | 6659 1 050-43/50 |
| <b>100-pair building entrance terminal, single-pair system</b>   | 18.56" x 5.75" x 5.06"<br>(471.5mm x 146mm x 128.6mm) |                  |
| 25' stub   |   | 6659 1 100-73/25 |
| 50' stub   |   | 6659 1 100-73/50 |

6/10 • 102094AE

## TrueNet® Structured Cabling

